

LISKEARD SIXTH FORM

Prospectus



<https://www.liskeard.net/sixth-form>

Contents

Required Grades Overview	3
Welcome	4
Sixth Form Information / What's different about Sixth Form life?	5
University Visits	6
Careers and Work Experience	8
Exhibition of Creativity	10
Sixth Form Socials	11

COURSE LIST - A LEVEL SUBJECTS

Art and Design	13
Biology	14
Business	15
Chemistry	16
Drama & Theatre Studies	17
English Language	18
English Literature	19
Environmental Science	20
French	21
Further Mathematics	22
Geography	23
History	24
Mathematics	25
Media Studies	26
Music	27
Philosophy & Ethics (RS)	28
Photography	29
Physical Education	30
Physics	31
Product Design	32
Psychology	33
Spanish	34
Textiles	35

COURSE LIST - ALTERNATIVE LEVEL 3 QUALIFICATIONS

OCR Cambridge Technical Sport and Physical Activity	37
Health and Social Care Diploma	38
Mathematical Studies	39
Applied Science	40

COURSE LIST - ADDITIONAL QUALIFICATIONS

Extended Project Qualification	42
English Speaking Board	43
Sports Leaders	44
Duke of Edinburgh Silver Award	45

Student Destinations	46
Questions / Contact	48

Required Grades Overview

Subject	Qualifications at KS4
Art	Grade 6 in either art, photography, media or textiles & English language 5
Biology	Biology grade 6 or trilogy science grade 66 & maths grade 6 & English grade 5
Business	Business grade 5 & maths grade 5 & English grade 5 (if no GCSE business discuss with Mr Aird)
Chemistry	Chemistry grade 6 or trilogy science 66 & maths grade 6
Drama & Theatre	Drama grade 5 & English language grade 5 (Must be prepared to attend rehearsals which are often after school)
English Language	English language grade 5 & English literature grade 4
English Literature	English literature grade 6 & English language grade 5
Environmental Science	Biology grade 6 or trilogy science 66 & maths grade 6 & English grade 5
French	French grade 6
Geography	Geography grade 5 & maths grade 5 preferred (If no GCSE geography discuss with Mrs Baker)
History	History grade 5
Maths	Maths grade 6
Further Maths	Maths grade 7
Media Studies	Grade 4 in two of the following: English language, English literature, media/film, drama, art, photography
Music	Performing at grade 5
Philosophy & Ethics	Religious studies grade 5 & English language grade 6
Photography	Grade 6 in either art, photography, media or textiles & English language grade 5
Physical Education	PE grade 5 & trilogy science 55 (Must play sport regularly. If no GCSE PE, science 6 required)
Physics	Physics grade 6 or trilogy science grade 66 & maths grade 6 (Maths is not essential to be taken at A level but would be highly recommended)
Product Design	Engineering 4 or product design 4 (BTEC engineering or construction also considered)
Psychology	Biology grade 6 or trilogy science grade 66 & English grade 6
Spanish	Spanish grade 6
Textiles	Art grade 5 or textiles grade 5
Level 3 Mathematical Studies	Maths grade 4/5
Level 3 OCR PE Technical Diploma in Sport & Physical Activity	5 GCSE grades of 4 in PE, science, maths & English (must play sport regularly)
BTEC Level 3 National Diploma in Health and Social Care	Grade 4 in maths Grade 4 in English (Applicants will have an additional interview with Mrs Jeff)
BTEC Level 3 Extended Certificate Applied Science	Combined science grade 55 or separate sciences grade 5 in biology, chemistry and physics. Grade 5 in maths Grade 5 in English

Students MUST have a least five GCSE grade 4 to do A Levels and any level 3 course.

Welcome

From the Head

My memories of being in the sixth form are some of my fondest and in my opinion school sixth forms are special places to study. Schools are well-equipped to provide the intimacy and the levels of care needed to support students in their journey from GCSEs to university or the world of work. Deciding where to study after Year 11 is an important decision and **we hope that this brochure will give you a flavour of what we can offer you and what life is like as a sixth former at Liskeard.**

Our Sixth Form is thriving, with strong student performance over the past three years and an impressive record of securing first-choice university placements for those pursuing higher education. Our dedicated Sixth Form team brings both expertise and experience to provide students with the best possible advice and guidance.

We offer a broad range of courses including a full range of A Levels as well as a number of vocational qualifications. Our facilities are superb – well equipped study rooms with internet access and a large common room for socialising. Sixth form students also have access to the main school facilities such as the multi-gym and canteens. Above all else, however, we have experienced sixth form teachers with a track record of securing success. In their last visit, OFSTED recognised our high quality of education, alongside our support for students' wider development.

We hope the information in the prospectus will be helpful to you. You are warmly invited to visit us at any time and we look forward to meeting you.

Dan Wendon
Headteacher



Head of Sixth Form

Welcome! Choosing what subjects or courses to study post-16 is a thrilling and important decision. At Liskeard Sixth Form, we are here to guide you every step of the way to help you achieve your full potential, whether that's progressing to university, securing an apprenticeship, or stepping into full-time employment.

We are incredibly proud of the success our students achieve in both A levels and Level 3 BTEC courses. Our students have gone on to study at top universities, including some internationally. Many have secured apprenticeships with prestigious companies such as Babcock, Princess Yachts, and Day Lewis Pharmacy, as well as a wide range of other local employers.

Liskeard Sixth Form offers a supportive and focussed environment in a close-knit community. Here, you'll benefit from being part of a smaller sixth form where you'll get to know your teachers and tutors, and they will get to know you. This close connection allows us to offer personalised guidance and feedback, ensuring you are supported in achieving your ambitions.

Our Sixth Form Team is dedicated to helping you succeed and providing a wealth of support throughout your studies. Your teachers are subject specialists with a wealth of experience in helping students reach their full academic potential. Your progress is continuously monitored, and feedback is regularly shared with both you and your parents to ensure you stay on track.

We pride ourselves on providing a mature and responsible learning environment where our students thrive. The combination of expert teaching, tailored support, and a positive ethos helps create a setting where students are motivated to succeed.

Please take the time to read through this prospectus. If you have any questions, or if you would like to arrange a tour of our facilities, do not hesitate to get in touch with us by email or phone. We look forward to welcoming you to Liskeard Sixth Form and supporting you on your academic journey.

Sixth Form Information

We offer a wide variety of courses at A level and these are a two-year commitment with examinations at the end of year 13. Along with 3 A levels, all students complete an additional qualification. They all carry valuable UCAS points too, which are needed for university applications. These qualifications are designed to develop research skills, presentation skills or leadership skills and are complementary to the A level choice.

After the exams in the summer term, Year 12 will have a work experience week. This is an excellent chance to extend your student profile and gain valuable experience that can directly relate to your chosen career. This is very useful when applying for universities, apprenticeships or entering the workplace. For students who wish to study medicine, veterinary science or teaching, work experience is vital.

Interviews for sixth form places will be in January/February and successful candidates will receive their offers by email, which will detail their choices and entry requirements. These emails are usually sent out in March/April. Formal enrolment takes place on results day and the day after.

Students are more than welcome to pop in to the Sixth Form Office if they have a question or change their mind about a subject choice or just want some more information.



What's different about Sixth Form life?

- You have a common room with a kitchen area
- You have greater freedom
- You are treated as young adults
- In lessons you work with the teachers in an excellent learning partnership
- We support your progress to further study or into employment
- We listen to your opinions and appreciate all feedback given
- We work with you to make sure that we provide the opportunities that you need
- We often host students from Europe, bringing an added dimension to our community
- You have designated study periods for you to work independently
- You have access to Mrs Fry who is our Study Skills Coordinator
- And lastly, Minnie the Sixth Form Dog

The Sixth Form office is always OPEN as well, offering support and guidance whenever needed. You are always welcome to drop in for a chat.



University Visits

Exploring University Options: Guided Visits and Strong Partnerships for Your Future

Choosing the right university is one of the most important decisions you'll make during your time at Sixth Form. To help you make an informed choice, we offer a range of opportunities for students to visit top universities and explore their campuses. These visits are an essential part of our university preparation programme, helping you gain a real sense of what life is like at different institutions, and to find the place that best suits your academic and personal goals.

University Open Days and Visits

We understand that seeing a university in person can make all the difference when it comes to deciding where to apply. That's why we organise **trips to university open days** and campus visits for our Sixth Form students. This gives you the chance to experience student life firsthand, speak with admissions teams, and get a feel for the academic environment.

In addition to these visits, we also include a visit to Oxford and Cambridge. This trip is a unique opportunity to explore one of the world's most prestigious universities and experience its rich academic traditions.

These visits provide an invaluable insight into the university experience and help you make more informed decisions about your higher education options.

Strong University Partnerships

We are proud to have established **partnerships with top universities**, including **Exeter University**, **Plymouth University** and **Marjon University**, which offer significant benefits for our students. Through these partnerships, we are able to facilitate **contextual offers** for students who meet specific criteria, ensuring you have the best chance of securing a place at university.

- **Contextual Offers:** If you meet the criteria, we can help you access **contextual offers** from universities, which may offer lower entry requirements based on your background, personal circumstances, or achievements. This can make the process of applying to university more accessible and achievable.
- **Exeter Scholars Programme:** Through our partnership with **Exeter University**, students have the chance to participate in the **Exeter Scholars programme**. This prestigious programme is designed to support students from underrepresented backgrounds and offer a range of benefits, including a **bursary award** based on your A-level results. The Exeter Scholars programme also provides you with valuable opportunities for academic support, mentoring, and preparation for university life.



Tailored Support for Your University Journey

Throughout your Sixth Form years, we'll provide personalised advice and guidance to help you navigate the university application process. From choosing the right course and university, to preparing for your UCAS application and personal statement, our experienced team is here to support you every step of the way.

We'll also offer one-to-one sessions with our dedicated careers advisor to discuss your options, answer any questions, and ensure you're well-prepared for the next stage of your academic journey.

The Pathway to Your Future

Whether you have a specific university in mind or are still exploring your options, the opportunities we offer to visit universities, along with our strong partnerships with institutions like Exeter University, can help you find the right place to study. The support we provide ensures you have all the information and advice you need to make confident, informed decisions about your future.

We believe that with the right guidance and opportunities, you can achieve your higher education goals and embark on a successful, fulfilling career. Our Sixth Form is dedicated to helping you explore the possibilities, discover new opportunities, and make the best choices for your future.

Start your journey with us and take the first steps towards achieving your dreams!



Careers and Work Experience

Pathways to Success: Supporting Your Career Journey

At our Sixth Form, we understand that university is not the right choice for everyone. That's why we offer a range of practical workshops and support to help you explore alternative career paths and prepare for the world of work. Whether you're interested in apprenticeships, internships, or entering the job market directly, we're here to guide you every step of the way.

Practical Workshops to Boost Your Employability

Our dedicated career workshops are designed to equip you with the skills and knowledge needed to stand out in a competitive job market. These include:

- **CV Writing & Cover Letters:** Learn how to craft a professional CV and write compelling cover letters that showcase your strengths, skills, and experiences.
- **Mock Interviews:** Get valuable practice in a real interview setting, with feedback to help you improve your confidence and performance.
- **Apprenticeship Preparation:** Through our strong links with industry providers, we host sessions that provide insights into apprenticeships and the skills employers are looking for.

We welcome local and International Businesses to come and meet and speak to our students, These include Babcock International who speak to prospective apprentices, offering you a unique opportunity to learn about real-world career opportunities and the skills required in sectors such as engineering, defence, and technology.

Stay Informed About the Job Market

We know how important it is to stay up-to-date with current opportunities. That's why we send out regular updates on apprenticeships and employment vacancies to students in Years 12 and 13. These updates keep you informed about the latest opportunities in Cornwall and beyond, ensuring you're always aware of your options.

Personalised Careers Support

In addition to workshops and job alerts, we offer **personalised careers guidance**. Our dedicated careers advisor is available to meet with you one-on-one to discuss your goals, provide advice, and help with any career-related queries. This support is tailored to your individual aspirations, whether you're considering apprenticeships, vocational training, or entering the workforce straight after Sixth Form.

A Strong Reputation for Student Support

As highlighted in our most recent **Ofsted** report, students consistently value the **strong, personalised support** they receive from our staff. In fact, **Ofsted 2020** praised our ability to offer both **high-quality education** and extensive support for students' **wider development**.

"Students value the strong, personalised support of staff" - Ofsted 2020

"They (students) appreciate the high quality of education alongside the support for their wider development" - Ofsted 2020

We are committed to helping you succeed, no matter the path you choose. Our Sixth Form offers a range of opportunities to build the skills you need for a successful future, whether that means entering the workforce or pursuing further training.

Start Your Journey with Us

If you're ready to explore your career options and take the next step towards your future, we'd love to have you with us at our Sixth Form. Together, we can help you unlock your full potential and prepare you for success in the world of work.

Valuable Work Experience for Year 12 Students: Bridging the Gap Between School and Career

At our Sixth Form, we believe that hands-on work experience is one of the best ways for students to gain a clearer understanding of their future career paths, develop practical skills, and build confidence in a professional setting. That's why we offer all Year 12 students the opportunity to participate in **meaningful work experience placements** that will help you get a head start on your future career.



Why Work Experience Matters

Work experience is a powerful tool for learning, offering you the chance to:

- **Explore Career Interests:** Whether you're thinking about a specific career or still exploring your options, work experience allows you to gain insight into different industries and roles. This firsthand exposure helps you make more informed decisions about your future.
- **Build Practical Skills:** In the workplace, you'll develop valuable skills such as time management, communication, problem-solving, and teamwork. These skills are highly valued by employers and will help you stand out, whether you're applying for jobs, apprenticeships, or university.
- **Boost Your CV:** Having work experience on your CV or UCAS application demonstrates initiative, commitment, and professionalism. It shows that you're proactive about your future and ready to take on responsibilities.
- **Network and Build Connections:** Work experience allows you to meet professionals in your field of interest, providing opportunities for mentorship and networking. Building these connections can open doors to future job opportunities and career advice.

Tailored to Your Interests

We understand that each student has unique career aspirations, which is why we work closely with you to identify placements that align with your interests and goals. Our team will help you find opportunities in a wide range of sectors, including:

- **Business and Marketing**
- **Engineering and Technology**
- **Health and Social Care**
- **Creative Arts and Media**
- **Education and Teaching**
- **Retail and Hospitality**
- **Science and Environmental Services**

We also have strong connections with local businesses and organisations, so we can offer placements that provide real-world experience in industries across Cornwall and beyond.

Throughout your work experience journey, you'll receive ongoing support from our dedicated team. Whether it's helping with placement applications, providing advice on how to approach employers, or supporting you during your placement, we're here to ensure that you make the most of your experience.

Work experience is an important stepping stone towards your future success, whether you choose to pursue further education, apprenticeships, or direct employment. The skills, knowledge, and confidence you gain will be invaluable as you take the next steps in your career.

At our Sixth Form, we are committed to providing you with the best possible opportunities to develop as a student and as a future professional. We are proud of the strong, personalised support we offer, helping you unlock your potential and prepare for life beyond Sixth Form.

Start your journey with us, and gain the real-world experience you need to thrive in your chosen career.

Exhibition of Creativity



Each year we have the privilege of viewing our sixth formers' superb work during the end of year exhibitions. Their level of creativity is wonderful and is a fantastic inspiration to the lower years and the public.

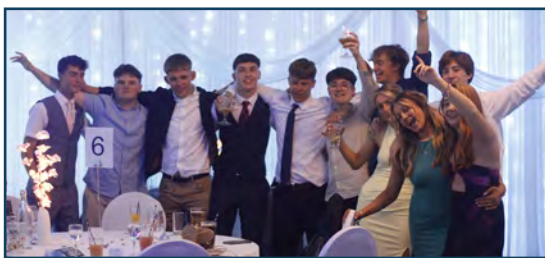


Sixth Form Socials



Let the good times roll!

Around Christmas we hold a fancy dress ball and in July we have a summer ball. They are always a good opportunity to relax and have fun.



Subject List

A Level Courses



The Course

This qualification aims to develop skills in visual communication suitable for application in the creative industries. We will support you in developing your creative thinking and artistic skills through practical experimentation and exploration, technical skill development, historical and contemporary investigation and analysis, aesthetic understanding and critical judgement. We encourage a personal response throughout the course and support students with a high degree of personalised learning through a structured curriculum, bespoke tutorials and guided learning. Visual language sits alongside the written and spoken word as fundamental in interpreting our increasingly integrated and complex world. Our aim is not only to enable you to realise the highest possible A Level attainment, but to prepare you for interview and future progression into further learning in all fields as well as the creative industries. This visual arts course will enrich, stimulate, excite and provide a unique opportunity to share your ideas, vision and passion to a wider audience. We look forward to creative conversations with you.

Assessment

There are two components to the course.

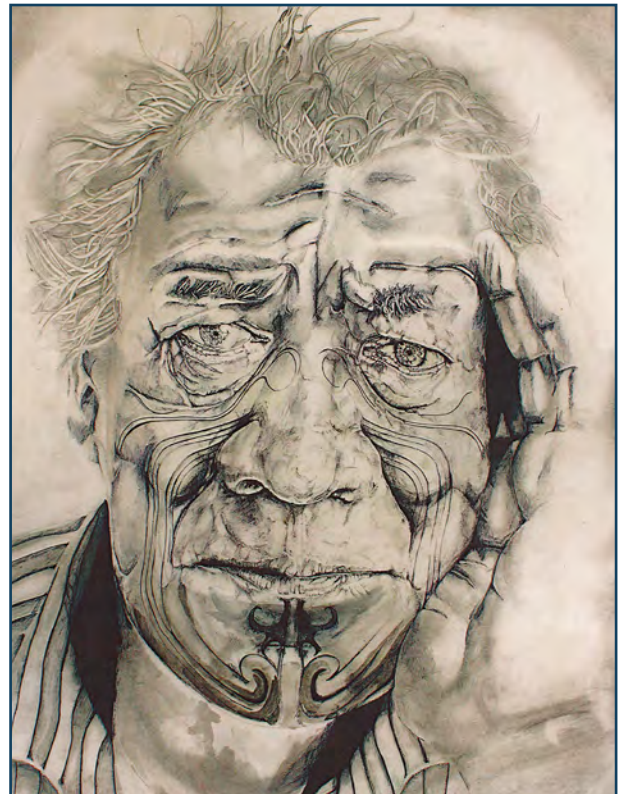
Component 1 – 60%

Component 2 – 40%

Component 1 requires a written study (1000 - 3000 words) together with practical work. Component 2 is practical, with a practical exam at the end.

Entry Requirements

- GCSE English language grade 5
- GCSE grade 6 in at least one of the following: art, photography, media, textiles
- A desire to draw with visual curiosity and determination to explore themes and ideas using a broad reference base. A confident understanding of visual grammar and the application of line, shape, colour, tone and texture. An openness to development; being adaptable, yet determined to achieve the very best outcomes.



Careers & Higher Education

Past students wishing to work within the creative industries have progressed into further and higher education studying in fields as diverse as marine photography, natural history illustration, journalism, graphic design, film and TV, animation, architecture, ceramics and glass, design and innovation. However, the course will add academic breadth, research, creativity, innovation and communication skills that are fundamental to success in all fields.

Biology

OCR



The Course

Biology is a deeply fascinating subject which explores the natural world at a macroscopic and microscopic level. By studying biology you will develop an advanced knowledge and understanding of living organisms in terms of their physical structure, chemical processes, molecular interactions, physiological mechanisms, development and evolution. You will gain an understanding of the connection between humanity and the living world and an interest in the lives and interactions of all life on Earth. Biology tackles some of the biggest and most fundamental questions which allow us to understand life itself.

We are very passionate about biology and will take you on a journey which will give you a lasting passion for the subject. We will support your learning in every way we can, whilst sparking your curiosity and teaching you how to ask questions. The world needs biologists like never before to solve many of the challenges it faces today. As the human population continues to grow, and living standards continue to improve, pressure on the natural world to feed, clothe and provide energy for us will test scientists, especially the biologists.

Assessment

Paper 1 - Biological Processes (37%)

Paper 2 - Biological Diversity (37%)

Paper 3 - Unified Biology (26%)

You will also be internally assessed and awarded a Practical Endorsement which runs throughout the course and interleaved within the course content.

Entry Requirements

- GCSE Biology grade 6 or Trilogy Science grade 6
- GCSE Maths grade 6
- GCSE English grade 5



Careers & Higher Education

By studying Biology you will be opening up a whole world of opportunity. Biological career pathways include: healthcare, medicine, bioengineering, bioinformatics, horticulture, conservation, dentistry, forensic science, psychology, biochemistry, physiotherapy, botany, zoology, genetics, oceanography, marine biology, pharmacology, science journalism, research and many more.





The Course

Business is an increasingly relevant and dynamic subject in today's world. It combines a number of other subjects and skills, including maths, English, geography and the creative arts. As part of the course, you will develop a number of skills key for employment in the modern world, whether you choose to work for someone else, or start a business yourself. Key themes you will learn about include: marketing, financial planning and analysis, people management, operations management, business strategy and decision making techniques. However, it is not just about the content, the business A level will also develop a number of critical life skills to make you more employable such as: numeracy and literacy; interpretation of graphs, understanding statistics and diagrams; communication and presentation skills and of course team work. Business is a real life subject in an ever changing world and therefore an interest in relevant news stories is essential. You will also have the opportunity to see what you learn in action, with field trips to local businesses.

Assessment

Three 2 hour exams. Two are worth 35% each and focus on specific parts of the course. The last one is worth 30% and focuses on a pre-released scenario.

Entry Requirements

- Grade 5 in GCSE Business
- Grade 5 in English and maths
- We regularly accept students who did not study business at KS4. For further information, please speak to Mr Aird.



Careers & Higher Education

Business allows you to go onto study a number of related courses at university, should you want to. Such courses include business management, accounting, human resource management, travel and tourism, logistics, events management, cruise management and economics. Many universities also offer business as a joint degree with other subjects. People with an A level or degree in business go on to a wide range of careers. In a rapidly changing world, business is always relevant and as such, possible careers are too long to list!





The Course

Studying A Level Chemistry will build on previous knowledge and answer questions such as 'what is pH?' And 'why do batteries work?' You will develop an advanced knowledge and comprehension in the different fields of physical chemistry and transition elements, organic chemistry and analysis, periodic table and energy, whilst learning how these all link together through your understanding of the fundamentals of atoms, moles, electrons and bonding. Learning Chemistry will help you to understand vast areas of your life from maintaining conditions in your body, development in reduction of CO₂ emissions and the future of plastics.

At Liskeard School we are very passionate about chemistry and will instil in you the same passion and enthusiasm. We will support your curiosity and teach you how to ask questions whilst supporting your learning in every way.

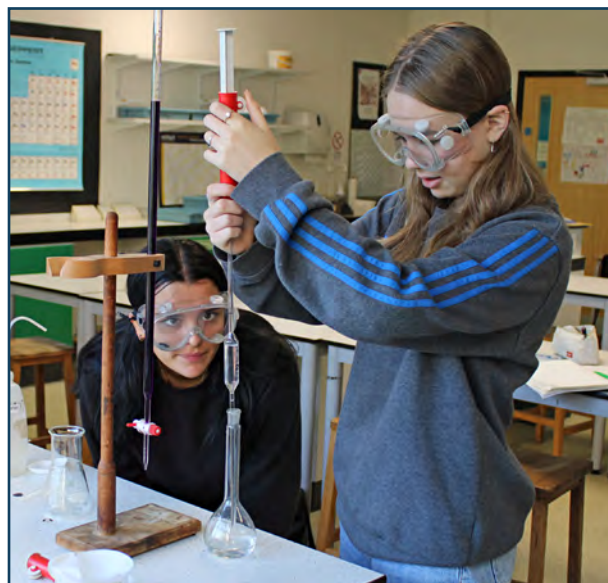
Now more than ever the world needs more chemists to support the future of our planet and to change lives by finding ways to cope with the increasing pressures on energy, food, water and other scarce natural resources. We need to live more sustainably by promoting scientific research and inspiring others.

Assessment

Assessment consists of three external exams: Periodic table, elements and Physical Chemistry (37%), Synthesis and Analytical techniques (37%) and Unified Chemistry (26%). You will also be internally assessed and awarded a Practical Endorsement which runs throughout the course and interleaved within the course content.

Entry Requirements

- GCSE Chemistry grade 6 or Trilogy Science grade 66
- GCSE Maths grade 6
- GCSE English grade 5



Careers & Higher Education

By studying A Level Chemistry, you will gain skills in research, problem solving, critical and analytical thinking. You could help develop a life-saving vaccine, invent a new way to cut air pollution or create a new type of biodegradable plastic. Chemical scientists all over the world are working on climate change, human health, sustainable energy, issues that impact us all. What do you care most about?

Some career pathways include: healthcare, medicine, chemical engineering, research scientist, forensics, policy advisors, atmospheric chemist, sustainability manager, analytical chemist, sport scientist, biomedical science, pharmacology and drug development just to name a few.

Drama & Theatre Studies

Edexcel



The Course

This is a course that pushes students to develop and perfect their practical and theoretical understanding of all aspects of theatre. You will study as a group and as an individual and you will explore the huge range of theatrical styles, practitioners and acting techniques that could take you further in this field. All elements of the course are based around acting and you will be challenged to: create performances from scratch, analyse the theories of drama practitioners, study and question play texts and comment on live theatre performances. The course demands a high level of commitment to rehearsals as well as group and independent study. Reading plays, watching performances and researching acting methodology outside of lessons will be crucial in your success. The course offers the opportunity for practical exploration of theories and texts as well as written analysis and it will give you the chance to consider how wide the world of theatre really is. Learning is a collective process in this subject and we look to our students to bring their own creativity and drive to the studio, and to support and champion one another throughout.

Assessment

40% Devising – creating an original piece of work with portfolio:

- Performance – 20 marks
- Portfolio of evidence – 60 marks

20% Performance exam: Performance of one group scripted piece (36 marks) and one monologue (24 marks)

40% Written exam paper – 2hr 30min – 80 marks in 3 sections based on:

- the study of 2 set texts – actor, director and technician perspectives
- the study of one piece of live theatre

Entry Requirements

- GCSE Drama grade 5
- GCSE English grade 5
- (Discussion with Head of Drama if you have not taken Drama at GCSE).



Careers & Higher Education

Career opportunities include: studying acting further through Drama School or University, studying script writing, film studies or directing at Drama School or University. Working at a theatre in a backstage or technical role – costume, set, lighting and sound design, stunts. Teaching in schools or training others in performance.

English Language

AQA



The Course

English Language is a challenging, but fascinating course. Over the two years we will examine the ways that society is represented through language, and how individuals define themselves by their use of language. There are three inter-related units in the course.

Unit 1: Language, the individual and society:

- In this unit, we will introduce you to methods of language analysis to explore the ways that English, in its spoken and written form, is adapted to suit different purposes and audiences depending on a range of situations, contexts, relationships, status and channels of communication. We will also introduce you to the study of children's language development, exploring how children learn language and how they are able to understand and express themselves through language.

Unit 2: Language diversity and change:

- The aim of this unit is to allow students to explore language variety in its wider social and geographical contexts. We will study the diversity of English pronunciation and dialect, and explore the history of the English language, charting its changes over the centuries. We will examine attitudes to, and debates about, language diversity.

Unit 3: Language in action:

- This coursework element will allow you to explore and analyse language data independently, as well as develop and reflect upon your own writing expertise through two different pieces of work: a research investigation and a creative project.

Assessment

2 Exams – 2 hours 30 minutes each.

Paper 1 40% – assesses unit 1

Paper 2 40% – assesses unit 2

Non examined assessment (NEA) 20% - unit 3

Your teachers will guide you through the options for your NEA at the end of Year 12.

Entry Requirements

- Grade 5 in GCSE English Language and GCSE English Literature grade 4



Careers & Higher Education

English Language A Level provides an excellent training for any employment or area of interest involving communication, such as teaching, journalism, creative writing and publishing,

In addition, it provides a very useful background to further study in English, media, theatre, education, speech therapy, law, psychology or sociology.

English Literature

AQA Specification B



The Course

A Level English Literature is a fascinating course, designed to engage the heart and soul, as well as the mind. The texts we study span over five centuries and three continents, and will present you with a variety of mature ideas and perspectives on life, emanating from stories of passion and drama. The course offers students the opportunity to explore a range of texts and literary criticisms expanding and developing knowledge gained at GCSE. Lessons will involve a variety of learning strategies including group investigations, teacher and student-led presentations, close analysis and discussions, and video interpretations of some texts. The course consists of three units.

Unit 1: Aspects of Tragedy:

- In this unit we will study what drives the individual to overcome or fall victim to human flaws, family life and social circumstances. Texts include:
 - *Othello* by William Shakespeare
 - *Death of a Salesman* by Arthur Miller
 - *Tess of the D'Urbervilles* by Thomas Hardy
 - *Songs of Innocence and Experience* by William Blake

Unit 2: Political and Social Protest:

- This unit examines how writers challenge social conventions, as they explore cultural values and how they affect the individual.
 - *The Handmaid's Tale* by Margaret Atwood
 - *The Kite Runner* by Khaled Hosseini

Unit 3: Theory and Independence:

- The coursework unit, which is completed over both Year 12 and 13, encourages students to view texts through different perspectives: for example, feminist, Marxist, eco-critical or a range of narrative viewpoints. You'll study the AQA Critical Anthology and work by two writers: a novel and a selection of poems.

Assessment

2 Exams

Paper 1 - 40% 2 hours 30 minutes – assesses unit 1

Paper 2 - 40% 3 hours – assesses unit 2

Non examined assessment (NEA) 20% - unit 3

Your teachers will guide you through the options for your NEA during Year 12.

Entry Requirements

- GCSE English Literature grade 5
- GCSE English Language grade 5

Careers & Higher Education

English Literature A Level provides an excellent training for any employment or area of interest involving communication, such as teaching, journalism, creative writing and publishing. In addition, it provides a very useful background to further study in English, media, theatre, education, speech therapy, law, psychology and sociology.



Environmental Science

AQA



The Course

"Evolution is a tightly coupled dance, with life and the material environment as partners. From the dance emerges the entity Gaia." - James Lovelock.

This quote, from the father of environmental science, tells us that the different spheres of this planet – the biosphere, the atmosphere, the hydrosphere and the lithosphere are locked in a dance. This tightly coupled partnership of the living and non-living elements of the planet brings us the natural wonders we see today. How do salmon fertilise a forest? How does the colour of the land relate to climate and climate change? How do the choices we make influence living things thousands of miles away?

Most importantly, what can we do to change the direction the planet is going in? We will be trying to find answers to some of the greatest threats facing the planet today – the problems of plastic pollution, climate change, industrial and domestic pollution and many more. You will study how conservation is not just stopping hunting of rare animals but an ongoing, developing and ever-changing set of policies, influenced by the prevailing political climate and public attitudes.

By studying environmental science, you will gain a deep understanding of these concepts and so much more. You will not be able to look at the world in the same way!

Assessment

The A-level is two 3 hour exams.

Entry Requirements

- GCSE Biology grade 6 or Trilogy Science grade 66
- GCSE Maths grade 6
- GCSE English grade 5



Careers & Higher Education

Careers in environmental science are so varied it is difficult to consider them as one category. You could end up working from home most of the time or travelling around the world on an annual basis. You could be doing desk work, field work, or some combination thereof. Your focus could be mathematical, physical, or written. Of course, the majority of careers in environmental science are some blend in-between.

Some examples of possible careers are:

Wildlife Manager, Zookeeper, Horticulturalist, Conservationist, Mining and the Extraction industry, Environmental Consultant, Construction and, especially the growth industry of Sustainable Construction, Chemical Engineering, Astrobiologist, Planet hunter.



The Course

Would you like to develop your French language skills? Does living and working in another country sound exciting to you? If you are interested in learning about French culture, literature and lifestyles, our A Level French course is for you! There are many benefits of studying French, from enhancing travel to boosting career prospects. Travelling as a speaker of the local language will enhance a trip to Francophone countries; language is the most direct connection to culture. If you are aiming to become a key player in an increasingly interconnected and interdependent world, being able to communicate in more than one language is a vital skill. International language skills can be a significant competitive advantage in the global economy.

Assessment

There are three examinations, Component 1 - Speaking (30%), Component 2 - Reading, Listening and Translation (50%), Component 3 - Text / Film based essay writing (20%) (includes in-depth analytical study of novel and a film). In addition, you will have the opportunity to select a topic, linked to a French speaking country and culture and complete a short research project, to be presented and discussed in French.

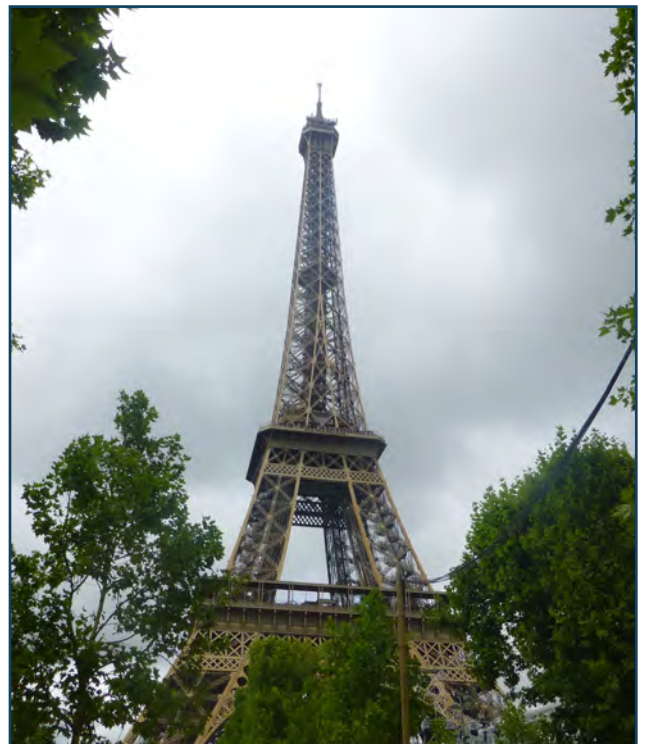
Paper 1 (listening, reading and writing) - 2 hours 30 minutes

Paper 2 (writing) - 2 hours

Paper 3 (speaking) - 21-23 minutes + 5 minutes prep time.

Entry Requirements

- French grade 6



Careers & Higher Education

Students of A level languages in recent years have gone to university, studying languages by themselves or combined with other subjects. A languages' degree can be combined with such subjects as business, management, law, administration, ICT, engineering, international marketing and journalism. Possible careers include translating and interpreting, journalism, law, publishing, museum curator or working for an international company.

Further Mathematics

AQA



The Course

Further Maths is an additional course, to be taken alongside A Level Maths. It comprises of pure and applied mathematics. Within the applied units you will study both mechanics and statistics. Further Maths pure content is composed of proof, complex numbers, matrices, further algebra and functions, further calculus, further vectors, polar coordinates, hyperbolic functions, differential equations and numerical methods. Mechanics is split into dimensional analysis, momentum and collisions, work, energy, power, circular motion, centres of mass and further moments. The Statistics option is made of discrete random variables, Poisson distribution, error types, continuous random variables, chi-squared test, exponential distribution, one sample t-test and confidence intervals.

Studying Further maths will help you develop the following skills:

- Fluency in the key mathematics topics for science and engineering
- Organising and presenting a structured and logical argument
- Confidence in mastering challenging ideas and overcoming difficulties
- Thinking in an abstract and symbolic way

Assessment

Three 2 hour exams (100 marks each)

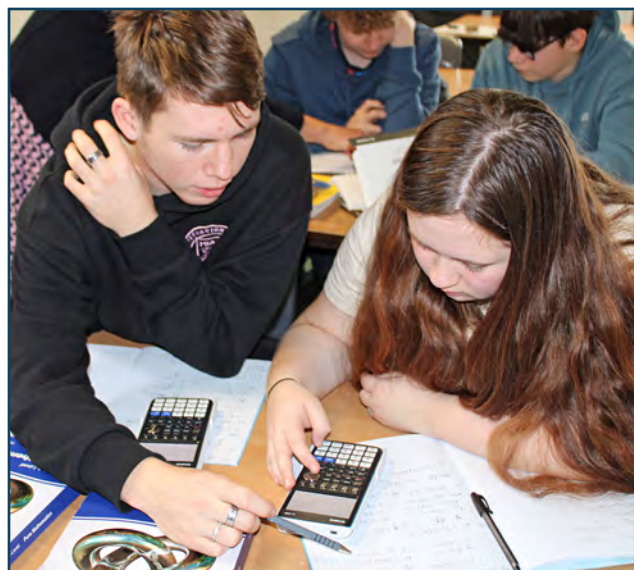
Paper 1 – pure only

Paper 2 – pure only

Paper 3 – mechanics and statistics

Entry Requirements

Due to the demanding nature of this course, we would expect you to have a grade 7 or above at GCSE Mathematics. Your algebraic skills need to be good, and you really need to enjoy Mathematics as you will be studying it for 7 lessons a week! To study further maths, you must also study maths at A-Level.



Careers & Higher Education

Like A Level Maths, Further Maths is also one of the Russell Group universities' 'facilitating' subjects, so called as they allow you to choose from a wide range of options of subjects to study at degree level. For those of you who are considering studying mathematics, physics and engineering courses beyond the Sixth Form, the Further Maths A-Level is seen as highly desirable by top universities, with some stating it as an essential entry requirement.

Having a strong mathematical education will enhance your enjoyment and performance in these areas of study.

Geography

AQA



The Course

Geography A level is a very relevant subject that can be combined with a wide range of disciplines. It is a natural link between the arts and sciences. It examines physical and human landscapes and the interaction between them. It combines a wide range of transferable skills – fieldwork skills, use of statistics, graphs, diagrams, map reading, literacy/numeracy and communication skills. As the world changes rapidly good geographers are needed more than ever and this is reflected in the uptake for A level Geography and how employable geographers are.

Assessment

2 exams – 2 hours 30 minutes each worth 40% each
NEA 20%

Entry Requirements

- GCSE Geography grade 5
- GCSE Maths grade 5



Careers & Higher Education

Many of our students go on to study geography at a higher level, increasingly specialising in areas such as hydrology (rivers), urban planning, hazard management, GIS and oceanography. There are numerous related disciplines which encompass 'environmental' subjects. Geographers are very employable people! They are much sought after by various employers due to their transferable skills. The subject is a good preparation for the world of work and it offers careers in tourism, conservation, meteorology, environmental issues, local government and many more.





The Course

History remains one of the most respected, valued, flexible, useful, and inspiring A level subjects available. It's about people and understanding how and why they acted in the past. History is a subject which develops a critical attitude towards evidence and problems by constantly asking the key question 'why?'. It also emphasises communication: lessons will give you confidence to discuss, make presentations, read constructively and extract information and ideas. You will present your knowledge and ideas in writing (short and extended) and through other media. Lessons will be varied! We will expect you to work co-operatively as part of a group and be prepared to contribute but we will help you build up the confidence to do this through a range of activities. The course will help you develop your own opinions and to formulate well-reasoned arguments. Our units of work cover a range of time periods as well as political and social history. The three taught topics are Russia 1894-1941, the Early Tudors 1485-1558, Britain and Ireland 1798-1921, plus a piece of coursework on a topic of your choice.

Assessment

One exam for each of the 3 units at the end of Year 13. One piece of coursework (20%) in Year 13

Entry Requirements

- GCSE – History grade 5



Careers & Higher Education

A Level History is a qualification which is hugely respected by universities and employers alike. History provides an excellent basis for training for a huge range of career opportunities: from marketing to media, politics to journalism, teaching to law - and many more! The transferable skills, such as evaluating evidence, supporting arguments, investigation and research, will equip you extremely well for higher education and also for the world of work.

Mathematics

AQA



The Course

Mathematics is a popular subject studied at A Level. It enables you to develop your understanding of topics already seen at GCSE, at the same time as introducing you to new areas of mathematics. A Level Mathematics supports many other subjects including physics, biology and chemistry. It is also useful for geography and psychology. Higher level mathematics qualifications are very well recognised by employers and universities and there is evidence to suggest that having a higher-level mathematics qualification may boost your future earning potential.

The A Level maths course is made up of pure and applied elements. Within the pure content you will cover and build on areas of mathematics which you first met at GCSE including proof, trigonometry, sequences and series, as well as learn entirely new content such as exponentials and logarithms, differentiation and integration. The applied elements of A Level maths comprise of statistics and mechanics, which combined make up 1/3 of the A Level exam. Within the applied units you will be introduced to the mathematical modelling of everyday experiences, for example driving a car or throwing a ball up in the air. You will have a better understanding of how the physical world operates and how to use maths to predict what will happen next following this module. Using statistics, you will interpret measures of central tendency and variation, understand and use simple, discrete probability distributions and use the Normal distribution as a model.

Assessment

Maths A-Level: three 2 hour exams (100 marks each)

Paper 1 – pure only

Paper 2 – pure and mechanics

Paper 3 – pure and statistics

Entry Requirements

- Grade 6 at GCSE mathematics



Careers & Higher Education

Maths is one of the Russell Group universities 'facilitating' subjects, so called as they allow you to choose from a wide range of options of subjects to study at degree level.

A Level maths is highly relevant as preparation for a number of degree courses and employment areas as it plays an integral part of many careers. As technology develops, so too does mathematics, enabling inventions and scientific discoveries to continue to flourish. By studying maths at A level you will have the opportunity to forge a career that's at the forefront of technological advancement and will develop several skills such as problem solving, analytical skills, research skills and logic. These are all transferable skills that will be useful in all aspects of your personal and professional life going forward.

Media Studies

Eduqas



The Course

The media shapes our understanding of the world. It reflects and communicates aspects of our public and private lives, whilst contributing to the creation of personal, social, cultural, and national identities.

Media Studies will challenge and empower you to analyse and interpret media content and to become more informed and critical about the media and its role in everyday life. Being controlled by powerful corporate interests and media makers, this can shape how we view the world. Do you want to learn how to recognise the things that influence the media and spot when you're being influenced?

A wide range of platforms are studied, ranging from vloggers to feature length film. Historical and contemporary media is explored and analysed. Example texts include Hammer Horror's 'Kiss of a Vampire', Marvel's 'Black Panther' and the superstar Beyonce's 'Formation' music video. You will have the opportunity to produce, edit and direct your own productions from a variety of platforms (print, moving image, websites). You will have access to the dedicated media suite equipped with cameras, sound equipment, blue screen and utilise editing software including Sony Vegas, Adobe Premier, Da Vinci Resolve and Photoshop, all of which are used in the industry.

Assessment

Two exams

- Component 1 – 2 hours 15 minutes
- Component 2 – 2 hours 20 minutes

One non-examination assessment (NEA)

- Research and planning
- Create **Two** media products selected from a brief set by Eduqas (choices include: Film, TV, Internet, Music, Magazines)

Entry Requirements

Grade 4 in two of the following:

- English Language
- English Literature
- Media/Film
- Drama
- Art
- Photography



Careers & Higher Education

Opting for Media at A Level, opens the gateway to many different career pathways. It's excellent training for any employment involving communication: journalism, broadcasting, animation, marketing, music, media and more. In addition, it provides a very useful background to further study in film and media studies, theatre, journalism, English, marketing and psychology or sociology. A vast majority of students who study media at A Level choose to continue their studies at higher education. Student destinations for studying a media-related subject have included: Salford University, Falmouth Art College, Plymouth Art College, Bristol University



The Course

Music is an art; music is a science; music is a social skill; the study of music aids the intellectual and emotional development of the whole person. A level music enables students to build on established musical strengths and interests and to foster a greater understanding of music over a broad timescale. The disciplines involved in the study of this subject at A level provide a firm foundation for candidates to choose a path best suited to their needs. This could be within the music industry, academic study or for interest. It will give them a life-long enjoyment and understanding of music as a listener or performer, at any level. An A level in music also enables access to most other courses (both arts and sciences) in higher education and employment.

You will study a wide range of music in its historical and cultural contexts; musical interpretation and instrumental techniques in relation to performing. You will also learn the elements of melody, harmony and counterpoint within a variety of traditional styles and the ways in which these can be applied to your own original compositions.

Assessment

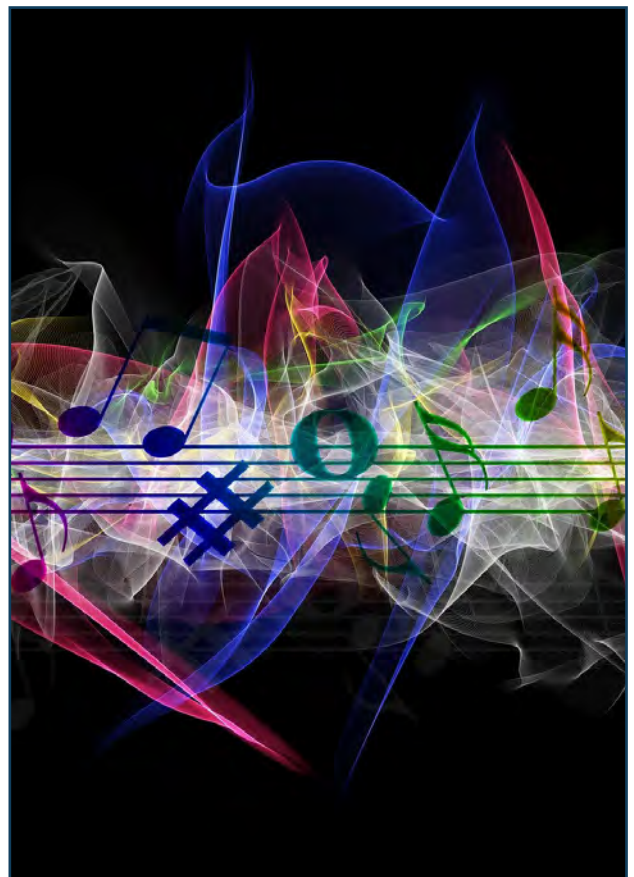
Unit 1 - Appraising Music - listening, analysis and contextual understanding paper – 40%

Unit 2 - Performing - You will create a 10 minute solo and/or ensemble performance as an instrumentalist and/or vocalist – 35%

Unit 3 - Advanced Composition. You will compose 2 pieces, lasting a minimum of four and a half minutes in total: one to a brief provided by the exam board, and one as a free composition - 25%

Entry Requirements

- GCSE Music grade 6 and play an instrument to at least grade 6 standard by the end of the A level.
- Without GCSE Music, you must be at least grade 6 standard on an instrument at the start of the course and have a very good knowledge of music theory.
- It is essential that all candidates are able to
 - a. read and write music with ease before they begin the course
 - b. play a musical instrument.



Careers & Higher Education

Study music at university or in a conservatoire.

Possible careers include performer, composer, instrumentalist, sound engineer, music therapist or a music teacher to name but a few.

Philosophy & Ethics (RS)

OCR



The Course

Religious Studies is a highly-respected, deeply interesting and incredibly rewarding subject. Through studying Philosophy and Ethics, you will deepen your knowledge and understanding of people and society, including why people think what they think and do what they do. You will explore some of the biggest questions of all time, such as, 'How should people make decisions?', 'What makes us human?' and 'Does religion shape society or does society shape religion?'. You will get the opportunity to study a range of famous ideas and theories, which have and will continue to influence many areas of the world, including law, the arts, politics, and beliefs.

You will have lots of opportunity to discuss, debate, reflect and re-formulate your ideas, whilst developing your ability to argue persuasively. Through writing and discussion, you will analyse and evaluate the most influential ideas ever known, both ancient and modern.

As well as gaining a wealth of knowledge, by the end of the course you will be a confident communicator, an academic writer and a seriously logical thinker!

Assessment

Students select which questions they answer in each exam.

There are three two hour exams for each of the units:

Philosophy

Ethics

Developments

Entry Requirements

- GCSE Religious Studies grade 5
- GCSE English Language grade 6



Careers & Higher Education

A qualification in Philosophy and Ethics (RS) provides an excellent foundation for a wide range of careers in different sectors including law, journalism, medicine, the media, the police, education, and politics. Both universities and employers alike value the high-quality transferable skills developed within this course. Students learn to reason, critically analyse and communicate persuasively, as well how to write and speak like a scholar! To quote the careers section of The Guardian, "Philosophers carry certain kudos, being viewed as 'thinkers' with a perception of life and society that can be very useful in numerous environments."

Photography

AQA



The Course

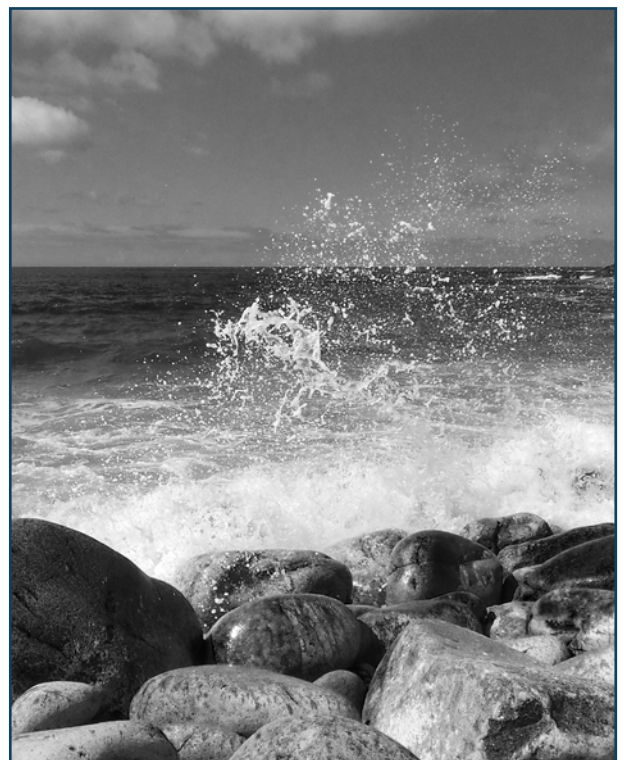
This qualification aims to develop specific skills in visual communication through lens based media, suitable for application in the creative industries as diverse as film and television, illustration and journalism, animation and graphic design, advertising and marketing, to name just a few. Your study will begin by experimentally layering negatives and creating camera-less prints in the dark room, before processing and printing your own, chemically processed darkroom photographs from negatives. You will then use our DSLR's and edit in our Apple Mac suite. We will support you in your creative thinking, composing and application of technical skills. We will do this through a variety of methods including experimentation and exploration, aesthetic understanding and critical selection and judgement. We encourage a personal response and support students with a high degree of personalised learning through a structured curriculum, bespoke tutorials and guided learning. Where appropriate, we encourage you to apply your developing skills to real life, professional briefs, enhancing the authenticity of your learning. Our aim is not only to enable you to realise the highest possible A Level attainment, but to prepare you for future progression into further education and learning. This course will enrich, stimulate, excite and provide a unique opportunity to share your ideas, vision and passion to a wider audience. We look forward to creative conversations with you.

Assessment

There are two Components to the course. Component 1 – 60% and Component 2 – 40% of the grade. Component 1 requires a written study (1000 - 3000 words) together with practical work. Component 2 is practical, with a practical exam at the end.

Entry Requirements

- Grade 5 in GCSE English Language
- Grade 6 in at least one of the following GCSE subjects: art, photography, media, textiles, drama and theatre studies, chemistry, physics or history
- A visual curiosity and desire to explore themes, meaning and ideas using a broad reference base. An openness to development; being adaptable, yet determined to achieve the very best outcomes using traditional chemical processing as well as new technologies.



Careers & Higher Education

Past students wishing to work within the creative industries have progressed from the A Level, into further and higher education; studying in fields as diverse as forensics, medical imaging, marine photography, journalism, computer programming, film and TV, animation, architecture and graphic design. The course will also develop your creativity, innovation and communication skills. These are fundamental to success in all areas of life.

Physical Education

OCR



The Course

Have you ever wondered ...

- Why some people run faster than others?
- How your personality affects your performance?
- Why people take drugs?
- How you could become an elite performer?
- How technology can help you?

Studying A Level Physical Education will give you a fantastic insight into the amazing world of sport performance. Not only will you have the chance to perform or coach a sport through the non-exam assessment component, you will also develop a wide ranging knowledge into the 'how?' and 'why?' of physical activity and sport.

Assessment

Physiological factors affecting performance - 2 hour written paper (30%)

Psychological factors affecting performance - 1 hour written paper (20%)

Sociocultural issues - 1 hour written paper (20%)

Performance in Physical Education – practical and oral assessment (30%)

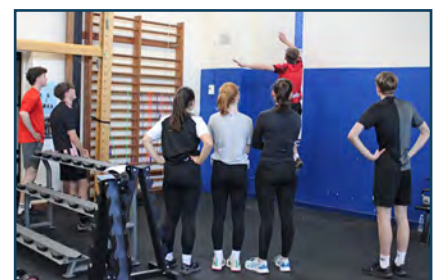
Entry Requirements

You need to have a genuine interest in sport and a good level of practical ability as well as a determined attitude and the ability to meet deadlines and work independently. Students should also possess Grade 5 in GCSE PE (or Grades 6 in GCSE Science) and play sport on a regular basis outside of school.



Careers & Higher Education

Are you thinking of becoming a physiotherapist? Aiming to manage a gym? Wanting to become a personal trainer? Wanting to influence the diet and exercise habits of the nation? Fascinated by the human body? Studying other Sciences? Or do you just want to understand the why behind sports performance? PE is a highly valued A level which enables students to take a wide variety of courses at university from medicine and law to the arts. Many students who choose PE go on to pursue careers in the leisure industry, physiotherapy, teaching, coaching, the armed forces, sports journalism, and the police.





The Course

There is much to learn about our universe and A level Physics is a great place to start. We provide the platform to nurture the innate curiosity about the big questions of existence that every physicist starts out with. If you want to discuss the topics of life, the universe and everything; the physics classroom is where those discussions happen. From galaxies, black holes and supernovae on the biggest scales of the universe, down to quantum mechanics, electrons, quarks and nuclear energy at the smallest scales, the Physics A level course literally covers everything.

At Liskeard Sixth Form we run the OCR A level Physics course. This covers the more traditional topics within the subject and are fundamental to most university physics courses. These include mechanics, materials, waves, electricity and quantum physics in year 12, followed by thermal physics, oscillations, fields, nuclear and particle physics, medical physics, stars and cosmology in year 13. The course has several opportunities for practical work throughout the programme of study, ranging from experiments with a simple pendulum, through to determination of Planck's constant and finding a value for absolute zero. The topics of study are broad and far reaching, giving students a wider understanding of physics in general and is excellent preparation for their next step in life.

Assessment

Paper 1 – 2 hours 15 minutes - Modelling physics 37%

Paper 2 – 2 hours 15 minutes - Exploring physics exam 37%

Paper 3 – 1 hour 30 minutes - Unified physics 26%.

There is a pass/fail practical endorsement awarded for practical skills. Students must keep a record of their practical work throughout the 2 years to show evidence of meeting minimum skills standards in order to achieve the pass mark.

Entry Requirements

- GCSE Physics grade 6 or Trilogy Science grade 66
- GCSE Maths grade 6



Careers & Higher Education

A level Physics will enable progression to the full suite of studying physics at university. It is also often a pre-requisite for medical and engineering degree courses as well as a great accompaniment to further study in mathematics.

Opportunities for employment for physics graduates range from education to research, engineering to finance and beyond. Physics graduates are often prized for their data handling skills and mathematical modelling in fields beyond the science itself. With potential future developments with Newquay spaceport, there may soon be many more physics-based career opportunities in Cornwall beyond the current opportunities in medical physics and radiology, naval nuclear reactors, aerospace, communications, materials and astronomy.

Product Design

AQA



The Course

If you want to use your creativity and imagination to design and make prototypes that solve real and relevant problems, then you will love the Design & Technology: Product Design A level course. We have excellent facilities that will allow you to experiment with and develop your skills in CAD modelling, drawing and presentation techniques, 3D CAM model making and you will have access to well-equipped engineering and wood workshops to help with the hands-on parts of the course.

Assessment

Externally Assessed Examinations:

Paper 1 Technical principles - 2 hours and 30 minutes 30%

Paper 2 Designing and making principles - 1 hour and 30 minutes 20%

NEA (non-exam assessment) Substantial design and make project with a written or digital design portfolio 50%



Entry Requirements

- Any DT GCSE grade 5
- BTEC Level 2

Careers & Higher Education

Destinations for A level product design students in the past have included universities to undertake degrees in product design, architecture, civil engineering, and building surveying degrees; Babcock International (Plymouth) to undertake higher level apprenticeships in marine architecture, mechanical engineering & manufacturing, fabrication and business administration; Princess Yachts (Plymouth) to undertake higher level apprenticeships in carpentry/boat building.



Psychology

AQA



The Course

Psychology is the scientific study of mind and behaviour. If you are interested in people and curious about what motivates them, this is the subject for you.

At Liskeard, students start immediately with projects to gain insight into others. You will design and conduct your own experiments, observations, questionnaires and interviews from the beginning of the course. As part of the science department, you will develop the research method skills that enable you to collect valid and reliable data. Practicing these techniques and being able to discuss them is highly valued by potential employers and universities.

Psychology finds answers to the big questions. Why do we fall in love? Why do we fight wars? Why do we walk into a room and forget why we are there? More importantly: psychology educates people about human nature, reduces prejudice and makes the world a better place.

Assessment

There are three two hour exams which are a mixture of multiple choice, short answer and extended writing.

Entry Requirements

- Sciences: Grade 6 in Biology, Grade 5 in Chemistry and Physics.
- Science Trilogy: Grade 6.
- English Language: Grade 6.
- Maths: Grade 6



Careers & Higher Education

A Psychology degree is a great starting point for a career in both science and the arts, as it equips you with a range of skills and opens opportunities with a variety of employers. Previous students have become professional psychologists, psychiatrists and many other related fields.

The application of a reasoned approach, problem solving and manipulation of data, provide useful tools for careers in healthcare, law enforcement, finance, IT and research. Knowledge of human behaviour and motivation is well-suited to careers in the creative industries, the legal sector, government administration, education, commercial and industrial companies, financial organisations, human resources, marketing companies, the media, the NHS, police forces, prisons and social services and still more!





The Course

Would you like to develop your Spanish language skills? Does living and working in another country sound exciting to you? If you are interested in learning about Hispanic culture, literature and lifestyles, our A Level Spanish course is for you! There are many benefits of studying Spanish, from enhancing travel to boosting career prospects. Travelling as a speaker of the local language will enhance a trip to Hispanic countries, language is the most direct connection to culture. If you are aiming to become a key player in an increasingly interconnected and interdependent world, being able to communicate in more than one language is a vital skill. International language skills can be a significant competitive advantage in the global economy.

Assessment

Paper 1 - 50% (listening, reading and writing) 2 hours 30 minutes
Text / Film based essay writing

Paper 2 - 20% (writing) 2 hours
Includes in-depth analytical study of novel and a film

Paper 3 – 30% (speaking) 21-23 minutes + 5 minutes prep time

In addition, you will have the opportunity to select a topic, linked to a Hispanic country and culture and complete a short research project, to be presented and discussed in Spanish.

Entry Requirements

- GCSE Spanish grade 6



Careers & Higher Education

Students of A level languages in recent years have gone to university, studying languages by themselves or combined with other subjects. A languages degree can be combined with such subjects as business, management, law, administration, ICT, engineering, international marketing and journalism. Possible careers include translating and interpreting, journalism, law, publishing, museum curator or working for an international company.

Textiles

AQA



The Course

This course provides students with a broad and rounded exposure to different aspects of art and design under the subject of 'Art Textiles'. Students are encouraged to display and develop their creative skills in order to produce visual and tactile responses. You will encounter and work with a variety of media and a wide range of textile processes and materials. This will enable you to build a portfolio of exciting and dynamic textile-based art. You will be encouraged to look at the world around you for inspiration using photography and drawings to start your investigations. This course will enable you to develop your own interests and individual expertise, allowing you to create work in the form of garments/outfits, installations or textile art pieces.

Assessment

Component 1: Personal investigation is 60% of the overall A Level grade. The remaining 40% will result from Component 2: Externally set assignment. The external assignment paper is released in February with a period of research to develop ideas, followed by a 15 hour exam to produce a finished textile outcome.

Entry Requirements

- Grade 5 in GCSE Textiles, Art or Photography
- A GCSE in textiles, art or photography is not always required if a strong interest in the subject can be demonstrated.



Careers & Higher Education

This course is ideal for students wishing to build a portfolio to study degree courses in textiles art/ fine art. Alternatively, this course can be used as a platform for related degrees such as fashion and textile design, costume design, surface pattern, fashion marketing, fashion photography, theatre design and interior design.

There are many career options for students who have skills in textiles, including roles within the fashion and textiles industry. Potential roles include designers, buyers, marketing, business and many more.



Subject List

Alternative Level 3
Qualifications

OCR Cambridge Technical Sport and Physical Activity



The Course

The Cambridge Technical courses are designed with the workplace in mind. Taught in a practical manner to mirror the real world experiences you will have once you leave school. These courses will help you develop your life and employability skills such as organisation, time management and your public speaking. All these skills are integral to all walks of life and all possible careers in the future.

Do you have an interest in:

- The world of sport and how it is developed, designed and funded?
- The physiological, emotional, social and psychological impact sport and physical activity has on a person?
- Developing your life skills to make you employable in all sectors of the working world?

You will be given opportunities to experience the sporting world from the frontline, with opportunities to observe and participate practically in a range of real-world settings. You need to be prepared to conduct research using a range of resources. The course will give you an insight into many sports sectors, from the leisure industry and personal training through to outdoor education and teaching.

Assessment

We offer two variations of the course with the possibility 'upon completion of the extended certificate' for students to continue onto the diploma.

- Extended Certificate – equivalent to one A level
- Diploma – equivalent to two A levels

Students will be assessed internally via written coursework, video presentation and practical leadership of peers or younger students and externally by exams (2/3 units per course.)

On completion of the course students will be awarded one of the following grades: Pass; Merit; Distinction; Distinction*



Entry Requirements

- Merit at OCR Cambridge National level 2 (sport studies or sport science) or level 4 at GCSE PE
- Grade 4 in Science and English Language.

Careers & Higher Education

What could you do at the end of the course? Attend university and study a range of sports courses. Or you could start working in the sport and fitness sector.

Students who have successfully completed this course have moved on to career choices in many areas such as PE teaching, sports coaching, and leisure management, physiotherapy, sport nutritionists, sport psychologist, outdoor education instructor and the police.

Pearson BTEC level 3 Diploma in Health & Social Care



The Course

From the moment we're born health and social care is part of every person's life. Do you think about the different lives each person has and the ongoing support and care they need?

If you are keen to develop your knowledge, skills and practical experience to prepare for an exciting, challenging and rewarding career and further study in health or social care, this is the course for you.

This qualification is a two-year full-time course equivalent in size to two A Levels, for learners intending to go onto further study in a related sector.

Employers and professional bodies have endorsed the course content as being appropriate for learners interested in working in the sector.

This qualification supports the essential skills of time management, organisation and research that contribute to effective practice when working in the health and social care sector.

In order to demonstrate knowledge, understanding and awareness of the health and social care sector, learners are required to undertake a minimum of 100 hours of work experience as a requirement of the course.

Assessment

Five internally assessed units
Three external exams

Entry Requirements

- Four GCSEs at grade 4, including English language or literature.
- You will also be subject to a Disclosure and Barring Service (DBS) clearance check.



Careers & Higher Education

BTEC Nationals support progression to the workplace either directly or via study at a higher level. The health and social care sector makes up a huge proportion of the jobs' market in the UK, with the NHS alone employing 1.5 million people! Our goal is to help inspire you to go on to work in a sector which has such a huge impact on people, providing you with a rewarding career in the process. BTEC Nationals are accepted by over 150 UK universities and higher education institutes for relevant degree programmes, including the humanities and social sciences.

Career opportunities include: Occupational Therapist, Community Outreach Worker, Healthcare Assistant, Care Worker, Adult Nurse, Youth Worker, Social Worker. 100% of successful learners have gone on to employment in the sector or further study.

Mathematical Studies

(Core Maths)



The Course

Mathematical Studies is a Level 3 certificate, and is equivalent to an AS qualification. There is a use of real life scenarios which makes the mathematical skills come alive and be relevant to everyday life. You will find the personal finance module particularly relevant. You will gain an understanding of payslips, taxation, national insurance, loans, mortgages and the cost of credit, as well as comparing savings schemes.

It is designed to consolidate and build mathematical understanding, foster the ability to think mathematically and apply maths in unfamiliar situations.

The course also aims to prepare you for the mathematical demands of higher education and work where there is a distinct mathematical or statistical element, but where the mathematical demands do not stretch to a requirement for A-level mathematics. It will help with other A level subjects in which these skills can be applied, in particular geography, business studies, psychology, as well as technical and vocational qualifications.

Assessment

2 exams in May, 1 hour 30 mins each
Paper 1 Analysis of data, mathematics for personal finance and estimation
Paper 2 Statistical techniques and critical analysis



Entry Requirements

- GCSE grade 4/5 in mathematics

Careers & Higher Education

Mathematical Studies is particularly valuable for any student planning a future that requires good quantitative skills, whether that be in higher education or employment. Degrees such as biology, geography and business studies all expect a high level of mathematical competency that can be supported by studying the course. Also, the qualification supports technical apprenticeships of differing levels and vocations.



NEW - Applied Science

BTEC Level 3 Extended Certificate

The Course

Are you interested in bits of all the Sciences? Do you like to learn about the practical application of Science? Are you organised; do you prefer coursework over exams? Then this could be the course for you, with a more gentle step up from GCSE to A Level and useful in a variety of careers including nursing, laboratory work and accepted by universities, this could be the course for you.

BTEC Level 3 Extended Certificate is a two-year course and is equivalent to 1 A Level. The course content includes both mandatory and optional units, of which some are assessed externally and some internally. The course develops a sound foundation through the study of fundamental biological, chemical and physical principles whilst exploring applications of medical science.

What other subjects go well with Applied Science?

Applied Science can work well alongside Mathematics, Psychology, Health and Social Care and Sport.

Assessment

58% Exam & 42% Coursework.

Entry Requirements

Entry requirements are slightly lower than A-levels:

- Combined Science GCSE students: 5-5 Grade or above.
- Separate Sciences GCSE students, ideally Grade 5 or above in Biology, Chemistry and Physics.*
- Students must also obtain a Grade 5 or above in GCSE Mathematics and a Grade 5 or above in English Language / Literature.

As with all A Level subjects, students must be prepared to carry out a considerable amount of private study and attend support sessions when appropriate.

*students who have 2/3 Separate sciences at Grade 5, but less than grade 5 in one science should speak to the Head of Science.

Careers & Higher Education

Successful completion of the course can lead to employment, college or university. Previous students have gone into a wide range of courses, including Biomedical Science, Forensics, Psychology and Nursing. This course will count towards university UCAS points and is Graded (Distinction/D*, Merit & Pass) UCAS range ~16-56.

Biology



Chemistry



Physics



Additional Qualifications and Enrichment

Extended Project Qualification

The Extended Project Qualification (EPQ) will give you a taste of what university life is like whilst in the Sixth Form. You will develop the skills required to take charge of an academic project and learn how to carry out independent research on a large scale.

The topic you choose to research can be anything you want, within reason! Think about your interests and passions. You could opt to explore contemporary issues such as Climate Change, Human Rights or Animal Welfare. You may choose a topic which is linked to your future degree choice or career path. The project can also be practical, such as creating and delivering a lesson to Year 7 students or producing a TED talk for your peers.



The course begins with a short online programme of study skills, covering time management, decision making, academic research, critical thinking and essay writing. This is supported with regular mini lessons and ongoing advice from your supervisor. To achieve the qualification, you choose to complete either an artefact and short report or an essay of 5,000 words. With both options you will document your progress through a Production Log and make an oral presentation of your conclusions.

The benefits of choosing an EPQ:

- The EPQ allows you to develop your knowledge of a topic you care about.
- The skills you develop will be invaluable for most jobs and university courses.
- The qualification is recognised by many universities as excellent preparation. Some universities lower the entry requirements on completion of an A grade EPQ.

The EPQ is the equivalent to an AS Level and an A* will gain 28 UCAS Points.

Is liquid fluorine a better oxidiser than liquid oxygen for traveling between Earth and Mars with a liquid hydrogen fuelled multistage rocket?

By William Dinnie

Are the FEI rules and regulations being enforced and reviewed adequately in regards to protecting horse welfare?

What is convergent evolution?

- When two completely genetically distinct animals develop the same trait or behaviour.
- Eg. The camera lens eye
- Could this apply to the intelligent behaviours demonstrated by cephalopods?

What is the better oxidiser?

	Oxygen	Fluorine
Efficiency		✓
Storage	✓	
Production	✓	

Liquid Oxygen

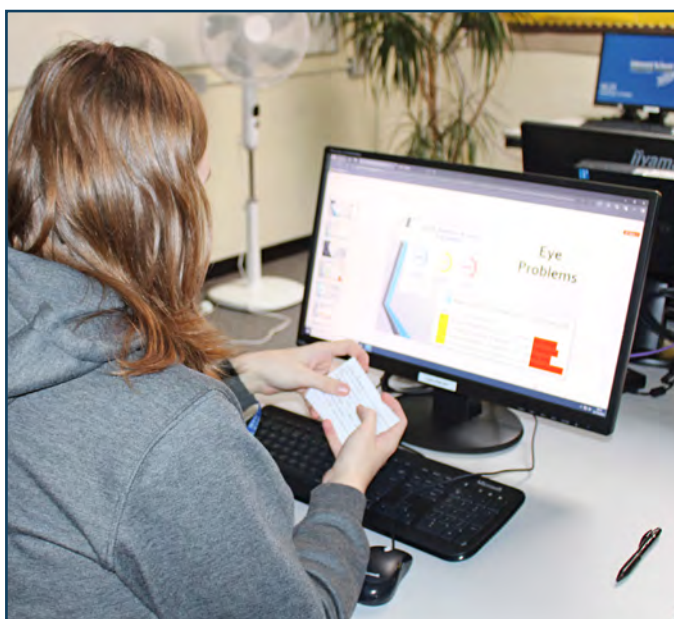
English Speaking Board

30 UCAS points at Distinction level

All university degrees and most jobs involve projects and presentations. This award is an excellent way of helping you to gain confidence in improving your communication skills as well as your analytical, critical thinking, and presentation skills.

Whatever your route to employment, employers continue to feed back that teamwork and communication skills are central to their success and need to be of a higher standard when young people enter the workforce. The development of effective communication, alongside an accredited qualification, will give you a clear advantage when applying for a place in college, university or in the job market. You can include the details on your CV or personal statement.

ESB in Speech is externally assessed and is a combination of individual presentations and group discussions. The award is designed to be a social and fun experience with lots of lively discussions and debates combined with great teamwork and camaraderie.



Sports Leadership Award

This is a course designed to give students the skills needed to lead groups in safe sporting and recreational activity.

Further Education And Careers

The Level 3 Award in Sports Leadership is an ideal step towards achieving national governing body coaching qualifications and promotes the work of volunteers in sport. This award will provide a valuable insight into many careers with the field of sport and recreation as well as developing leadership skills. If your chosen career demands leadership qualities this award is the ideal way to further understanding in this area.

This award is looked upon favourably with applications to university and organisations such as Camp America.



Course Details

This award complements A Level studies as there is minimal written input and no formal written exam. Leadership ability, attendance and 30 hours of leadership service are the key areas of assessment. This award does not require specific ability in any one sport but aims to develop confidence in students taking responsibility for small groups. The course comprises eight units:

- Developing leadership skills
- Plan, lead and evaluate a sports activity event
- Lead safe sports/physical activity sessions
- Plan, lead and evaluate sports/physical activity sessions for children
- Plan, lead and evaluate sports/physical activity sessions in the community
- Plan, lead and evaluate sports/physical activity sessions for disabled people
- Plan, lead and evaluate sports/physical activity sessions for older people

The award is further supplemented by a placement in our feeder primary schools.

Further Advice and Information - Mr M Lemin



Duke of Edinburgh Silver Award

The Duke of Edinburgh (DofE) Silver Award is a unique and challenging opportunity for students to grow personally and professionally outside the classroom. Open to all students, the Silver Award builds on previous DofE experience (though it's fine for newcomers!) and offers students the chance to develop key life skills that will support them in higher education, employment, and beyond.

What's Involved?

Students participating in the Silver Award will engage in four main sections: Volunteering, Physical, Skills, and the Expedition. Each part encourages students to take on responsibilities, embrace new challenges, and support others, whether by volunteering locally, learning a new skill, or enhancing their physical fitness.

Why Do the Silver Award?

The DofE Silver Award offers a range of benefits that help students grow in confidence, resilience, and independence:

- **Boosts Employability:** Completing the Silver Award is highly regarded by universities and employers alike. It demonstrates commitment, reliability, and the ability to work in a team - qualities that set students apart in a competitive world.
- **Develops Key Skills:** The award allows students to build essential skills such as leadership, problem-solving, communication, and time management. Each activity offers new ways to develop and apply these skills, with a real impact on their future pathways.
- **Strengthens Resilience:** From learning to plan an expedition to overcoming challenges in the wild, students develop resilience and adaptability - traits that will help them face academic and life challenges with confidence.
- **Gives Back to the Community:** Through volunteering, students have the chance to make a positive impact on their local community, supporting causes they care about while gaining a deeper understanding of the importance of civic responsibility.
- **Fosters Friendships and Teamwork:** DofE is a shared journey, and students often build lasting friendships along the way. Working in a team on challenging expeditions and projects promotes a sense of camaraderie, belonging, and mutual respect.

Ready to Take on the Challenge?

If you're interested in pushing your limits and gaining invaluable experiences, the Duke of Edinburgh Silver Award is a rewarding choice. Talk to our **Ms S Rowe** to learn more about how you can get involved and make the most of this incredible opportunity.



Student Destinations

Name: Abi

Destination and Course: Achievement Training - Plymouth - Beauty Therapy

Name: Minnie

Destination and Course: GAP Year - Olive & Co then Swansea - Marine Biology

Name: Emily

Destination and Course: Apprenticeship - Nursing Associates

Name: Namwan

Destination and Course: Apprenticeship - Navy/RAF - Hydrology

Name: Morwenna

Destination and Course: GAP Year - The Old Mill Gift Centre then Aviation

Name: Max

Destination and Course: Apprenticeship Babcock - Engineering/IT

Name: Shaya

Destination and Course: Exeter - Applied Psychology

Name: Avril

Destination and Course: Imperial College - Physics

Name: Ben

Destination and Course: Duchy University - Agriculture

Name: Ethan

Destination and Course: Exeter - Natural Science

Name: Beth

Destination and Course: Paramedic - Paramedic course

Name: Amy

Destination and Course: Plymouth - Biological Sciences

Name: Silvie

Destination and Course: Portsmouth - Physics and Astrophysics and Cosmology

Name: Joe

Destination and Course: British Army

Name: Keira

Destination and Course: Plymouth - Biological Sciences

Name: Alfie

Destination and Course: Plymouth - Maths with Computer Science

Name: Nathan
Destination and Course: Falmouth - Digital Media

Name: Ted
Destination and Course: Plymouth - Civil Engineering

Name: Freya
Destination and Course: GAP Year - McDonalds then Belfast - Criminology and Social Policy

Name: Josh
Destination and Course: Plymouth Marjons - Sports Therapy

Name: Kirsty
Destination and Course: Plymouth - English

Name: Oliver
Destination and Course: Apprenticeship - Accounting

Name: Livie
Destination and Course: Falmouth - Media Production

Name: Jago
Destination and Course: Cardiff - Spanish and Japanese

Name: Melissa
Destination and Course: Exeter - Biological Science

Name: Dina
Destination and Course: Plymouth - Criminology

Name: Chloe
Destination and Course: Bristol - Biochemistry

Name: Lilia
Destination and Course: Plymouth - Psychology

Name: Scarlet
Destination and Course: Apprenticeship - Dental Nurse

Name: Alice
Destination and Course: Cornwall College - Agriculture with livestock science

Name: Quinn
Destination and Course: Southampton - Spacecraft Engineering

LISKEARD SIXTH FORM



FAQ

Bursary:

16-19 Bursary details will be available on enrolment day. Applications should be made directly to the Sixth Form.

Transport:

Application forms are only available online from <https://www.cornwall.gov.uk/collegetransport>. The transport team can also be contacted on 0300 1234 1010.

What happens next:

1. Complete an application form
2. An interview will follow
3. An email will be sent to all successful candidates
4. On GCSE results day in August, staff will be available for consultation.
5. Enrolment day is on GCSE results day or the day after.

You can contact us anytime for further discussion or clarification.

Head Teacher - Dan Wendon - dwendon@liskeard.net

Head of Sixth Form - sixthform@liskeard.net

Liskeard Sixth Form
Luxstowe
Liskeard
Cornwall
PL14 3EA

Telephone: 01579 342344

E-mail: sixthform@liskeard.net

Website: www.liskeard.net/sixth-form



Liskeard Sixth Form is a member of SMART (South East Cornwall Multi Academy Regional Trust). SMART is an exempt charity and a company limited by guarantee, registered in England and Wales with company number 7542166. The registered office is at Liskeard School & Community College, Luxstowe, Liskeard, Cornwall PL14 3EA. Tel: 01579 325732.