

Liskeard School & Community College

achieving **more** together



*'Academic excellence with
inclusivity for all'*

Courage



Kindness



Resilience



*'We aim to provide an
excellent education so we
can all live successful and
responsible lives'*



Prospectus

Welcome.....	3
Ethos and Values.....	4
Our School.....	5
Our Sixth Form.....	6
Pastoral Support.....	7
Curriculum.....	8
Careers Education.....	10
RE, Sex & Relationships Education.....	11
Uniform & Equipment.....	12
SEND.....	13
STEM.....	14
Creative Arts.....	16
Sport.....	18
Extra-Curricular Activities.....	20
Transition from Primary School.....	22
Reporting Home.....	23
Home School Transport.....	24
Admission Procedures.....	24
School Meals.....	24
Safeguarding.....	25
School Leavers.....	25

...from the Headteacher

Welcome to Liskeard School and Community College!

It is a great privilege to be the Headteacher at Liskeard School. We have a special, inclusive community feel and students, staff, parents, families and visitors all receive a warm welcome.

I am passionate about working collaboratively with students, parents and the wider community to develop excellence and success to improve the life chances of young people.

We believe that we 'achieve more together' and we work hard to share and develop our core values: kindness, resilience and courage. I am driven as a school leader to work towards offering students a world-class curriculum entitlement and world class teaching every day. My aspirations for students and staff are sky high because having high standards and expectations contributes to everyone's success. I am ambitious for students to make excellent progress and am ambitious to create a distinctively focused and positive learning environment in every classroom. I want our students to succeed academically, whatever their starting point, challenges or life experiences. I want students to take strides in their personal growth and development as positive, empowered citizens.



I expect all students to conduct themselves in a way which contributes to a culture of pride and belonging to the school and to be fully prepared for learning. Our aim is to provide an excellent education so we can all live responsible and successful lives.

I believe that every young person has the capacity to do amazing things – it's our collective responsibility to help them believe this, too.

Thank you for your support as we grow and work together.

Dan Wendon, Headteacher

Ethos and Values



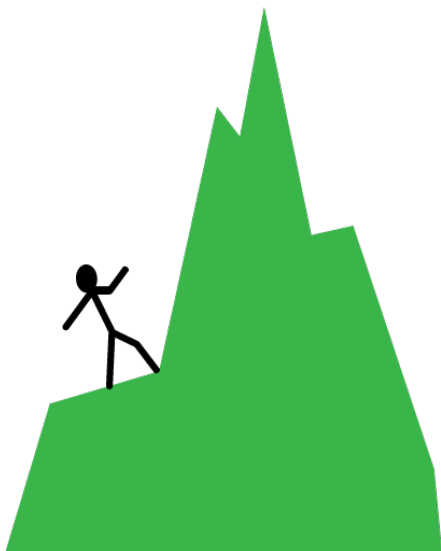
Team Liskeard

At Liskeard we believe that when we work together we achieve more. Being part of a team encompasses a number of important values that are as important in school as they are in life.

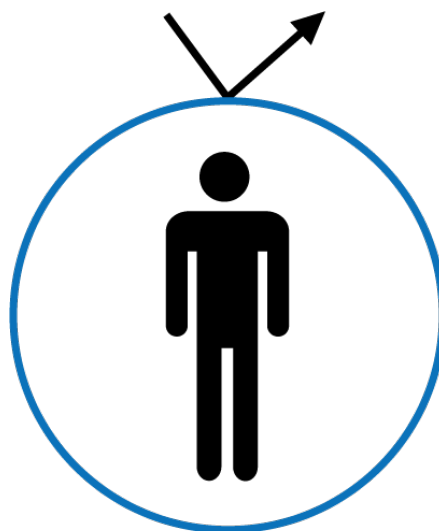
We believe that in Team Liskeard:

- Everyone has equal rights and has a voice
- Everyone should be treated fairly and with respect
- Everyone takes responsibility for their actions

We want our students and staff to lead happy and fulfilling lives. To achieve this, we believe the attitudes of courage, resilience and kindness are of utmost importance. With these attitudes, anything is possible.



courage



resilience



kindness

Daring to dream
and think
differently.
Having the
confidence to try
new things and
to take risks in our
learning.

Having the
character and
skills to deal with
difficulties in class
and in life.

Believing we can
all improve.

Caring for others.

Being a good
citizen and
taking social
responsibility.



Our School



Liskeard celebrated its 40th anniversary of being a comprehensive school in 2018, after formerly being a grammar school until 1978. It is a friendly, supportive and ambitious school with the success of students and staff at its heart. We currently have over 1200 students on roll and are oversubscribed.

We believe all of our students are capable of achieving individual excellence and of contributing positively to the wider school by playing an active and constructive part in school life. We challenge students to make the most of being a part of our school

community and teach everyone carefully how to achieve this. We have exceptionally high expectations and offer support to all to help them achieve their best. We expect high standards of behaviour and believe that every student has the right to learn without distraction or disruption. We place a strong emphasis on courtesy and politeness and do not tolerate bullying, discrimination or unkindness. We believe in the traditional values of courtesy, respect, consideration for others, punctuality and expect every student to show pride in the school identity by following our uniform guidance.



Art work created by Liskeard School students as part of their GCSE and A Level studies



Our Sixth Form

Our Sixth Form is highly successful and provides high quality personalised teaching, support, care and guidance. Having Sixth Form students in the school has many benefits. They help raise aspirations, they are excellent role models and they directly help younger students through mentoring or in class support.

Over the last 3 years there has been a 99%+ pass rate across all subjects and regularly over 90% of students applying to university gain entry to their first choice place. Our results put us in the top 10% in England regularly. We have strong links with several Russell Group universities and offer a strong suite of academic A Level subjects.

The success of our Sixth Form is excellent.



LISKEARD
SIXTH
FORM

Pastoral Support



We are committed to providing excellent pastoral support so that students can learn, develop and excel. Every student is placed into a tutor group led by a member of the teaching staff. Tutors are supported by a Head of Year and a non-teaching Assistant Head of Year. The Heads of Year are responsible for the all-round progress of the students in their year group. Students attend a friendly supportive morning greeting with their tutor group and whole year every morning, where they are met by their Head of Year and tutor team. This also gives opportunities to provide support to ensure everyone has what they need for the day ahead, both organizationally and emotionally.

Students are offered support in our purpose

built pastoral centre, The Hub. This is where they come as a 'one stop shop' for all of their pastoral needs.

Assistant Heads of Year work throughout the day to provide a very wide range of practical, emotional and social support to students. They are also trained to be able to offer specialised emotional health and well-being support.

The Wellbeing Hub is our specialist hub where students can access our in house team of trained counsellors, access other regular specialist health and wellbeing services and attend appointments with a range of outside agencies providing specialist support.



**Liskeard School
Wellbeing
HUB**



Curriculum

We believe that every student is entitled to access a world-class curriculum. This means we strive to capture something of the 'best that has been thought and said' in each of our curriculum areas. Our broad curriculum is designed to allow students to discover something new in all subjects, enabling them to increase their knowledge and understanding. We are exceptionally ambitious in our curriculum aspirations for all students and are committed ensuring that our curriculum is accessible. We work carefully to ensure that topics and knowledge are presented clearly, concisely and with lots of scaffolding and support to ensure that every student, irrespective of their starting point or the challenges they face, can aspire to excellence.

We are very keen that students develop

the attitudes, knowledge and skills needed to open up future opportunities. We want them to be fully prepared for their next stage in life understanding how success in school links to the real world and life beyond school.

Our curriculum and our lessons are built on solid foundations, informed by educational research. Lessons are structured so that students can benefit from predictable routines so that they can spend lots of time recapping prior learning, receiving expert modelling and explanation and practising knowledge and skills. This learning is underpinned by regular homework, which is designed to be relevant, clear and simple to access and understand.

Key Stage 3 (Years 7, 8 and 9)

Students devote a proportion of their timetable to studying the core subjects of English, Maths and Science. Other curriculum areas include Humanities, Creative Arts, IT, Languages (French or Spanish), Technology and PE. Part of our vision for academic excellence with inclusivity for all is that we want every student to access the fullest curriculum and we see this stage as a vital opportunity for students to build a strong foundation of knowledge and understanding across all subjects. Each subject incorporates content that links to future careers and that develops social, moral, cultural and spiritual awareness.

Key Stage 4 (Years 10 and 11)

All students follow a core curriculum of English, Mathematics, Science, PE, RE and PHSE (Personal, Health, and Social Education). Beyond this, students choose up to four additional subjects to study. We offer a specialised curriculum for Years 10 and 11 which includes highly specialised support for students through tutor time teaching to prepare for success and an extended school day for Year 11.

Students typically take 10 GCSE courses, although the curriculum is sometimes further adapted for pupils with particular needs in consultation with parents.

Years 10 and 11 options currently include Art, Business Studies, Child Development and Care, Computing, Construction, Drama, Food Technology, French, Geography, Health and Social Care, History, ICT, Media Studies, Music, PE, Photography, Product Design, Spanish, Textiles, Astronomy.

Key Stage 5 (Sixth Form)

We provide a varied and highly successful Sixth Form curriculum offering both vocational and academic pathways. Details are provided in a separate Sixth Form prospectus which is available on our website or from our Sixth Form secretary.



Careers' Education

Careers' education is taught across Years 7 to 13 and delivered as part of the PHSE programme and other areas of the curriculum. Under supervision from the Careers and Work Related Learning Co-ordinator, all staff at Liskeard School contribute to the Careers' Programme to help students develop the necessary skills to make informed decisions relating to their future. The open access Careers' Information Library is located in the library; it contains a wide variety of resources.

We offer regular opportunities for younger students to think about careers through events, visiting speakers and teaching, whilst students in Years 10 and 12 have one week of work experience. Extended work placements are available to those students who wish to participate in a more vocational pathway or are following an alternative provision timetable. All students have access to group and one to one Careers and Work Related Learning interviews and information sessions organised by local colleges and universities.

In addition, we have an ever-increasing number of links with local employers who provide a range of support activities from speaking in assemblies to delivering subject specific lessons or workshops, to offering workplace visits and mentoring for individuals or small groups. We also draw upon our current parents and our alumni to come into school to give insights as to what their job or career entails.

Once again, we have been accredited with the highly regarded Investors in Careers' Award for the service we provide our students.



RE, Sex & Relationships Education

Personal, Health and Social Education

Pupils in Years 7 to 11 are taught Personal, Health and Social Education (PHSE) through the tutor programme. It is a carefully planned programme which covers such matters as personal health and safety, sex and relationships education, social issues, citizenship, personal finance and careers.

Any parent wishing to know more about the content of the PHSE programme is welcome to contact us.

Ethics, Philosophy and World Views (formerly Religious Education)

As a school, we recognise the diversity of beliefs locally, nationally and globally. Our EPW curriculum is broad and enables students to explore specific beliefs and how belief can shape communities. It also gives students the chance to investigate real-world issues from their own religious and non-religious perspectives. In an ever-changing world, the importance of EPW is greater than ever.

Our EPW curriculum teaches students knowledge about other cultures and belief systems but also introduces students to the big ideas of philosophy and the history of ideas throughout the development of civilisation. Parents have the right to withdraw their children in whole or in part from religious education. Parents should write to the Headteacher to book an appointment to discuss this further.



Uniform & Equipment

School Uniform

All students in Years 7 to 11 are required to wear correct, neat and tidy uniform in school and on the journey to and from school. All items should be clearly named.

Uniform:

- **Black Blazer**
- **Black Jumper** - optional. A plain, black, v-neck jumper can be worn underneath a blazer.
- **Pale Blue Shirt** - short or long sleeved with a top button.
- **Red Tie** - for Years 7 – 10. (Blue tie for Year 11)
- **Black Liskeard logo Skirt** – Can be purchased from our local suppliers, [Glynn Valley](#) and [Gilberts Outfitters](#).
- **Black Trousers** – smart, black trousers only; not jeans or leggings.
- **Black Shoes** – flat, plain black, leather-type shoes. Not canvas shoes or boots.
- **Black Socks**



School shoes:

Flat, plain black leather type shoes (no canvas shoes or boots). **Please note:** Plain black leather type trainers are allowed.

Sports wear:

- School PE top*
- School PE shorts*
- School sports socks*
- School base layer (optional)*
- Trainers
- Football boots

*Specialist items of uniform and PE kit are available from:

[Glynn Valley Schools Wear](#), Unit 11, Miller Business Park, Station Road, Liskeard.
Tel: 01579-345677

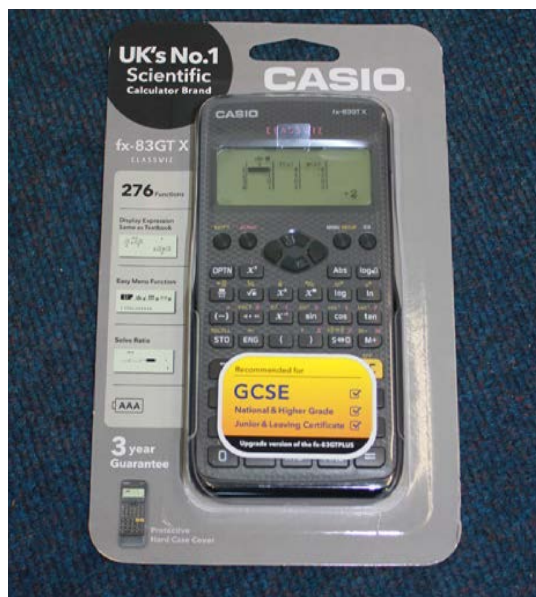
[Gilberts Outfitters](#), Fair Park Road, Liskeard.
Tel: 01579-344750

i No unnatural hair colours or radical styles including tramlines or shaved patterns are allowed. No piercings are allowed except for a single plain stud in each ear lobe which needs to be removed for PE lessons due to health and safety. Students should not wear nail varnish or noticeable make-up. We are a phone free school, so mobile phones should be switched off and in bags at all times.

Required Equipment

Daily support with uniform and equipment is provided at Student Services

Every lesson	Maths and Science	Languages	PE	Food Technology
Clear (see through) pencil case Exercise books Black pen Pencil Eraser Sharpener Ruler Glue stick Yellow highlighter Green highlighter Purple pen (for marking corrections and improving work) Calculator (CASIO FX-83GT CW or CASIO FX-85GT CW)	Protractor Compass	Dictionary (French or Spanish)	Games kit and footwear (suitable for the activity)	Your ingredients or money as required. Large container for the dish being made. Students with long hair will also need a hair band when doing a practical in science and technology.



Our Learning Support Team has an excellent reputation and has provided outstanding support to many students with SEND over the years. Students who have an identified Special Educational Need or Disability are considered carefully on entry to the school. If they have an Education Health Care Plan the school will ensure that any entitlement to extra support is provided. We believe that students with SEND have an entitlement to succeed and have the same entitlement to a world class curriculum as every other student.

- We want to make sure every student has the best access to our expert teachers and faculty hubs
- We provide carefully planned, highly structured specialist teaching in our Learning Support classrooms
- We have high standards for all and offer a very wide range of support to help everyone to meet expectations
- Personalisation and reasonable adjustment are built into all of our systems: in curriculum access, and in social and behaviour expectations, whether or not a diagnosis is in place

We have staff who are skilled and experienced in working with students who struggle with dyslexia, literacy, numeracy and social or emotional difficulties. We are experienced in working with students on the Autistic Spectrum and with students who have physical disabilities.

An Area Resource Centre (ARC) is based on the school site. This is a fantastic specialist facility supporting students with more complex needs. Students and staff in the ARC play an important part in our whole school community. Cornwall Council hold an external admission panel for access to the ARC. This is independent of the main school admission process. If you have any questions about this, please do not hesitate to contact us.



We believe in the importance of promoting the opportunities available to students in the world of STEM, both in terms of their learning experiences in school, but also in relation to future employment. We offer a wide range of STEM-related experiences from Year 7 through to GCSE and A Level. Examples include:

- Building and racing our Greenpower Go-Kart
- Attending the Medical Mavericks workshops at Plymouth CC for budding medics
- Solving the world's energy crisis on Year 7 STEM Day!
- Building a 15m suspension bridge at the Plymouth STEM Hub
- Exploring science at Exeter University
- Dissecting a semi-synthetic human cadaver during the VIVIT Experience
- Taking part in the national Maths Challenge





The Arts Faculty consists of Art, Music and Drama and there are very close links with Media and Dance. All staff working within the arts have experience of working within the creative arts industry, providing excellent background knowledge of their specialism as well as education.

Through the development of specialist skills in Art, Music, Drama, Dance and Media we enable our students to communicate their ideas openly, creatively and intelligently.

Our historic award of Artsmark Gold serves to illustrate how the creative and performing arts are thriving at Liskeard School and there are many and varied opportunities to get involved in, and beyond, classroom activities:



- Qualifications up to A Level
- Art, Music and Drama Clubs throughout the year
- Sound engineering and radio broadcasting
- Whole school Music and Drama productions (Little Shop of Horrors, Wizard of Oz, Bye Bye Birdie, Oliver, The Boyfriend, Bugsy and most recently School of Rock)
- Annual music performances at Liskeard Show, local residential homes, the Public Hall, Stuart House
- Whole school drama productions-performed at school for primary school pupils as well as the public (Macbeth, A Midsummer's Night's Dream, The Lion, The Witch and The Wardrobe.)
- Work with the RSC to stream live theatre in school for whole year groups.
- Additional paid instrumental/vocal lessons available through Cornwall Music Trust
- Annual Art Exhibition and local Art Exhibitions in the community
- Regular visits to theatres, galleries, Art colleges and University courses.
- Work with visiting artists, musicians and performers. E.g. Jenny Beaven, Attik Dance, Rick Worthy, Simon Harvey, Kurt Jackson, Seamas Carey, Reece Ingram, O-region, Rogue theatre, Sterts Theatre, TR2, Theatre Royal, Miracle Theatre Company, David Greeves (an aerial choreographer), Pearl of Africa Children's Choir, Piano Man, Real Ideas Organisation (RIO), Professional String Trios, Plymouth Symphony Orchestra.





We pride ourselves in the range of sporting opportunities that we offer our students both within the curriculum and outside of it. Our clubs are well attended and as a result we enter many tournaments in a large range of sports. We believe that sport should be accessible to all and we link extensively with local Primary and Secondary Schools. As well as taking part in PE lessons, PE clubs and fixtures, students get to represent their House in the inter-house competitions that run throughout the year. We are renowned within the county for our Sports Leaders' programmes, our Football Academy and our overall sporting excellence, coming in the top 5 in the Cornwall School Games year on year.



We have travelled far and wide with our students. We have been to Barcelona and the Nou Camp, the London Olympics and Paralympics, the ATP Tennis World Tour Finals, Wimbledon, the Eindhoven Cup, the Rugby World Cup Finals, Queens Park Olympic Hockey (The Champions Cup), Twickenham (Autumn Internationals), as well as watching the England Women's Cricket Team in a One Day International. We have also had visits from Paralympic Athletes David Hill and David Wetherill, Golf Pro Jason Avery, Rugby Coach Mike Smith and Cricket Coach Jack Mingo.

Please look us up and follow what we do on Twitter: [@Liskeard_PE](https://twitter.com/Liskeard_PE)





Extra-Curricular Activities

The school offers a wide range of extra-curricular activities both at lunch-times and after school, for example, in Sports, Drama, Art, Music, Engineering and Astronomy.

Details of our clubs can be found on the school's website.

Whole school music and drama productions are a regular feature in the school calendar. Previous productions have included School of Rock, Bugsy Malone and Charlie and the Chocolate Factory.

One measure of the quality of education at Liskeard School is the range of visits offered to students over the course of their time here. These visits will range from those supporting the curriculum, participating in teams to trips which involve adventure and exposure to new activities, which contain an element of risk. School trips help students to take responsibility for themselves, develop life skills and leadership qualities.

Previous visits include trips to London, camping in the Brecon Beacons, skiing in Italy, visits to Auschwitz, an expedition to Morocco and supporting community projects in Uganda. We have also established links with schools in France and Spain providing students with the opportunity to improve their language skills and learn about other cultures.





Challenge Week

Every summer, the school holds its annual Challenge Week. Students choose from a range of activities which include visits abroad such as France or Italy; outdoor education activities such as water sports, mountain biking, surfing, hiking or more cultural visits, for example, to art galleries and museums. Some students stay in school and work on projects such as making jewellery, 'play in a week', making furniture, sports events and Chef School. Each year, the offer varies slightly. Throughout the year, there are other visits for subjects and/or specific events and competitions.



Duke of Edinburgh's Award

As part of our extra-curricular programme we offer the opportunity for students to participate in the Duke of Edinburgh's Award scheme.

We offer participation in the Bronze Award for students in Years 9 & 10 and the Silver Award for those in Years 10 & above.

Alongside completing an overnight expedition, students must complete 3 other components to achieve the Award: Voluntary Service, Physical Activity and Skill Development.



Transition from Primary School

Transition begins with visits to our feeder primary schools to meet with pupils and teachers and to gather information about every child.

We have an excellent transition programme which includes two Induction Days for Year 6 pupils at the end of June. Pupils spend the two days with us in their new tutor groups and enjoy a variety of lessons. This is followed by a parents' evening on the first day and team-building activities on the second. Approximately, a quarter of the students also have the opportunity to attend our Explorers' Summer School once their Year 6 SATs have been completed. This is a bespoke programme that is offered to students who may struggle with anxiety, special educational needs or who may have difficulties socially or emotionally, or who need additional support with literacy and/or numeracy.



Once started, the new students are supported very well through a variety of ways. They have access to their own Year 7 social area and canteen. Year 9 Peer Mentors support them in class, during social times and show them how to get around school. We have a Head of Year and Assistant Head of Year who are experienced in knowing how to ensure all students settle into secondary school well and we run a residential trip for all Year 7 early in the Autumn term to help them build new friendships and increase their confidence.

If you have any queries about the transition of your child to Liskeard and would like more information or advice, please contact the main school switchboard on **01579 342344** to leave a message. Our Transition coordinator will return your call at the earliest opportunity.



■ Reporting Home

Parents play a key role in ensuring their children succeed at school. Regular communication with home is therefore essential.

Students receive daily, weekly and termly feedback on their progress. Progress Checks are sent home each year, detailing effort and attainment.

Also on each Progress Check is information about attendance, merits and behaviour points.

Merit postcards are posted home when students achieve a certain amount of merits.



After each Progress Check, letters from the Headteacher are sent home to the parents of the top 30 students who achieve the best effort scores in their Progress Checks and to those who have achieved the most merits.

We communicate news stories, important updates and reminders to parents via our website and social media pages.

Our large following on Facebook means it can be an effective way to communicate with parents. Please like us on Facebook at [@LiskeardSchool](#). Our [website](#) contains the whole school calendar and at the start of every year we send home a parent handbook detailing key dates for the year.

There is an opportunity for parents to meet with subject teachers at least once a year through Progress Evenings. These are calendared and take place in the Spring term for most year groups. An additional Tutor Evening for Year 7 students takes place in October, providing an opportunity for parents to meet with their child's new tutor and discuss how well they have settled into secondary school.

If you have a query or question about your child's academic progress, please contact the relevant Head of Faculty. If you have a question about pastoral support, please contact your child's Head of Year. Lists of these contacts are available on our [website](#).

Home School Transport

School Transport is generally provided by the Local Authority if you live more than three miles away from the school.

If your child is unable to walk to school due to a special need, disability or mobility problem or the nature of the route is deemed by the Local Authority to be unsuitable for pedestrian use, your child may be entitled to free school transport.

If you think this may apply to your child, please access the County website: www.cornwall.gov.uk/education-and-learning/schools-and-colleges/school-transport/ to download a form or contact them on **0300 1234 101**. If your child is currently in receipt of free school meals, no evidence of entitlement is required; otherwise please complete an application form from County. Please note that this entitlement is subject to review each year.

Admission Procedures

For pupils wishing to join the school, a county application form needs to be completed online. You can request a paper copy of the form from New County Hall. You need to select 'Liskeard School and Community College' as your choice and return the form to New County Hall, Truro. If the child is applying for a place at the start of Year 7, the form must be submitted by the deadline date. This is usually 31st October of Year 6. The applications are then processed for all schools by staff at New County Hall in Truro.

For in-year admissions for all year groups, please contact the school reception who will direct your enquiry to the relevant member of the senior team. A school admissions form must be completed once your application has been accepted by the county admissions team. Please note, that we are currently running with waiting lists in most year groups.

School Meals

Meals, snacks and refreshments are available before school (8.10 am – 8.40 am), at break time and at lunchtime. All meals comply with the National Food Standards and are of very good value. Set meals are also offered at a preferential price and the menu changes daily on a 3 week cycle. The school operates a cashless system which also provides detailed reports for parents about what their child has been buying.

If you are in receipt of a qualifying benefit and do not receive Working Tax Credit, you may be eligible to apply for free school meals and pupil premium. Please apply online at www.cornwall.gov.uk/schoolmeals or download a form from the County website www.cornwall.gov.uk. The School Meals' Team may be contacted by phone on **01872 323298** or by email to: schoolmeals@cornwall.gov.uk

Safeguarding

We take our safeguarding responsibility very seriously. If a child protection or safeguarding concern is raised, the following will happen:

- A full investigation;
- Appropriate agencies informed and advice taken to support the child as soon as possible;
- Parents informed unless it would be detrimental to the child or to the investigation itself.

If you have any queries, please ring and ask to speak to our senior designated officer for safeguarding or one of our deputies.

All staff receive regular safeguarding training and the school keeps abreast of all the most up to date national guidance on issues such as e-safety, child sexual exploitation and radicalisation. Please see our Child Protection and Safeguarding Policy on the school website for more information: www.liskeard.net

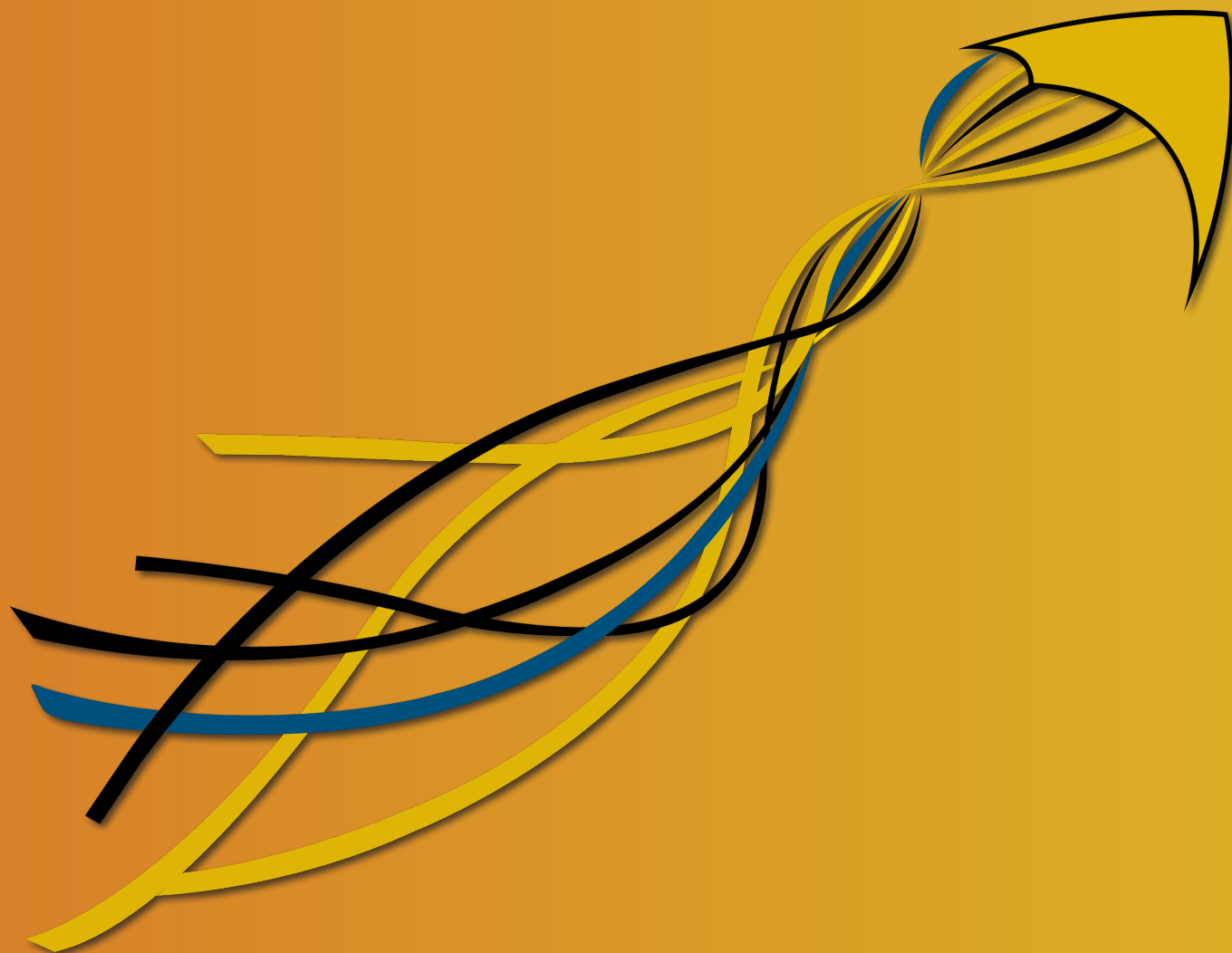
School Leavers

The destination data of our Years 11 and Year 13 leavers are excellent and regularly above the national averages.

Regularly, over 90% of students leaving us to go to university are accepted on to their first choice university and course. A high percentage of students applying to university are regularly accepted into one of the prestigious Russell Group Universities.

Over the last 3 years we have seen a significant increase in the number of students taking up apprenticeships. To support them, we link closely with training providers, employers and the National Apprenticeship Service so that students have up-to-date information about the apprenticeships available to them.





Headteacher: Mr Dan Wendon

Liskeard School & Community
College
Luxstowe
Liskeard
Cornwall. PL14 3EA

Tel: 01579 342344

Email: enquiries@liskeard.net

Website: www.liskeard.net



Liskeard School & Community College is a member of SMART (South East Cornwall Multi Academy Regional Trust). SMART is an exempt charity and a company limited by guarantee, registered in England and Wales with company number 7542166. The registered office is at Liskeard School & Community College, Luxstowe, Liskeard, Cornwall PL14 3EA. Tel: 01579 325732.