

**Liskeard School
& Community College**
achieving more together



#TeamLiskeard

Mission Transition

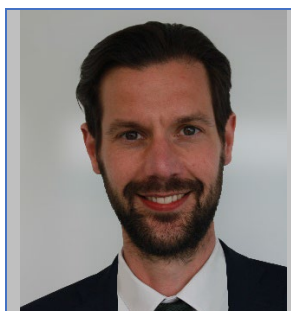
...the countdown to September has begun

CONTENTS

The A - Z of what you need to know

Who will support my child in Year 7?	1
Peer Mentors	1
Team Liskeard	2
Our Key Attitudes	2
What happens if my child is too ill to come into school?	3
Behaviour and Rewards	4
Child Protection and Safeguarding	5
Clubs and Leadership Opportunities	5 & 6
Communicating with School	7
Curriculum	8
Equipment	9
Expectations	10
First Aid	11
Food and the Canteen	12
Homework	13
Languages	14
Lessons	15
Literacy	15
Lockers	16
Lost Property	16
Mobile Phones	16
Payments	17
Porthpean	17
Progress Checks	17
Punctuality	17
School Map	18
Term Dates 2024-25	19
Times of the School Day	19
Timetable	20
Transport	21-22
Uniform	23

Who will support my child in Year 7?



Dan Wendon
Headteacher



Mrs Ayres
Primary Transition
Co-ordinator



Mr Pollard
Head of Year



Miss Piriou
Assistant
Head of Year

Primary Transition Co-ordinator: Mrs Ayres is the Primary Transition Co-ordinator for Liskeard School. Mrs Ayres, alongside Miss Piriou, has already visited many of your child's primary school to find out more about them and even spoken to many of you already. If you have any questions before September about your child's move to Liskeard School, please direct them to Mrs Ayres.

Head of Year 7: Mr Pollard, is your child's Head of Year. He will carefully monitor your child's progress and will liaise with you and your child's tutor, to ensure their time in school is positive and productive.

Assistant Head of Year: Miss Piriou, works closely with Mr Pollard to ensure your child is happy in school. Miss Piriou has no teaching commitments so has flexibility to deal with any issues quickly.

Your child's **tutor** is the first point of contact if you have any questions or problems in school from September. Your child will have a tutor base where they will meet with their tutor every day.

Subject teachers will be able to help your child with any subject concerns. Please speak to, or email, subject teachers if you have any problems in a particular lesson or with a specific piece of work.

Your child may have help in lessons or at lunch times from one of Liskeard School's **Teaching Assistants**. In lessons, teaching assistants are there to help students access the learning taking place.

Peer Mentors



Each tutor group will have up to six **Peer Mentors** from Year 9 who will help your child settle in during the first few weeks. They will be present in your child's tutor base during some tutor periods each week. The Peer Mentors are well trained and will know most things about life at Liskeard School. They are useful people for your child to speak to if they have a question or are worried about anything.

#TeamLiskeard

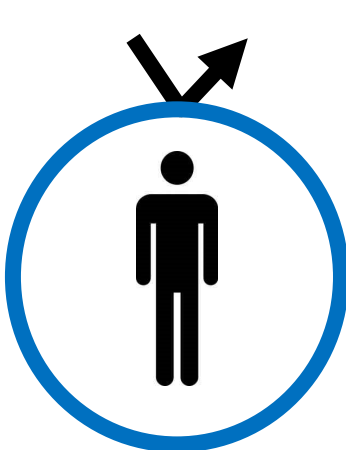
From the moment your child arrives in Year 7 they become part of Team Liskeard. This is very special because it means they have people to support them and help them to achieve their very best. When we work together as a team **ANYTHING** is possible!

In *TeamLiskeard*, we believe...

Everybody is equal and has a voice;
Everybody should be treated fairly and with respect;
Everybody takes responsibility for their actions.

Our Key Attitudes

At Liskeard we believe that the attitudes of **resilience**, **kindness** and **courage** are of utmost importance to enable students to lead happy and fulfilling lives. We will provide your child with many opportunities to develop these attitudes over the next few years. Please encourage your child to grab them with both hands!



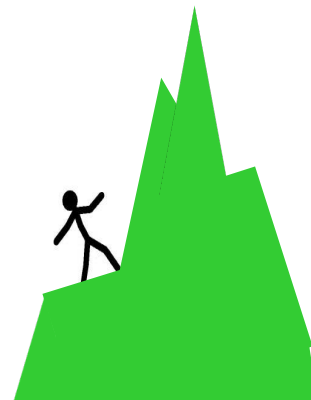
resilience

Having the character and skills to deal with difficulties in class and in life. Believing in a growth mindset.



kindness

Caring for others. Being a good citizen and taking social responsibility.



courage

Having the confidence to try new things and to take risks in your learning. Daring to dream and think differently.

What happens if my child is too ill to come into school?

Attending school every day is very important. Absence can have a detrimental effect on your child's learning. The aim is to achieve 100% attendance. If your child is very ill and cannot come to school, then it is important that you phone school to let us know every day that your child is absent. Once your child has been off for three days, medical evidence will be required.

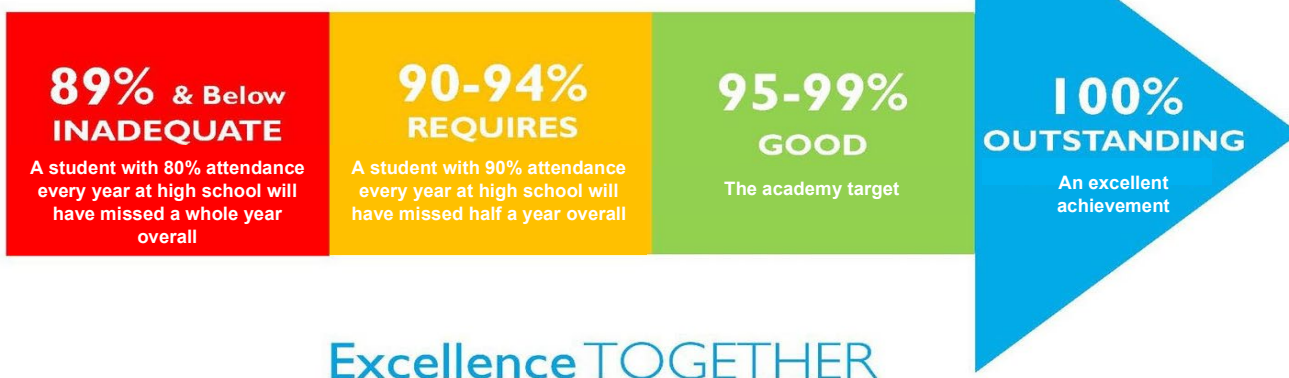
The phone number for the Attendance Office is **01579 325730** or **01579 342344 Ext 130**

Attendance Matters

Attendance Matters because **Every Second Counts.**

Good attendance = more learning opportunities = more qualifications = more choice.

Make it count for you!



Excellence TOGETHER

If your child needs to take time off for medical appointments, a parent/carer will be required to provide evidence. Absence request forms can be obtained from the Attendance Office or Reception; but, unfortunately, we are unable to authorise holidays in term time.

0 days off school in a year 0 lessons missed	100%	Perfect attendance
2 days off school in a year 10 lessons missed	99%	Excellent attendance
5 days off school in a year 25 lessons missed	97%	Good attendance
10 days off school in a year 50 lessons missed	95%	Slightly below average attendance
14 days off school in a year 70 lessons missed	93%	Poor attendance
20 days off school in a year 100 lessons missed	90%	Very poor attendance

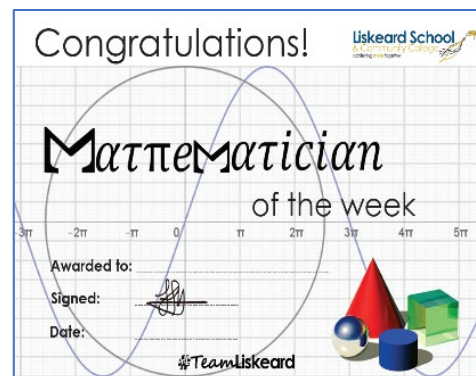
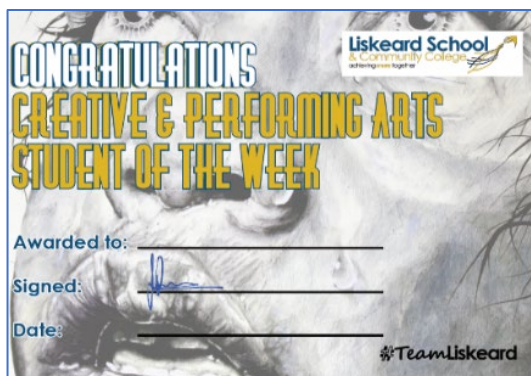
Behaviour and Rewards

The school rules at Liskeard School are in place to ensure that everyone has the right to learning without disruption. The rules are in place to keep students and staff safe, healthy and happy.

- Students are expected to be punctual to school and lessons.
- Students are expected to bring the correct equipment to school including books and writing equipment.
- Students are expected to be committed to learning in the classroom and avoid interrupting the learning of others.
- Students should wear full uniform correctly at all times including on the journey to and from school.
- Hair should be a natural colour and not an extreme cut.
- One pair of plain, stud earrings are permitted. Earrings must be removed for PE lessons. Students must not wear any other jewellery.
- Students should complete homework to the best of their ability and hand it in on time.
- Mobile phones can be brought to school at the student's own risk; however, they **must be turned off and placed in their bag**. They must not be seen, used or heard on site before school, in lessons, at social times or after school until out of the school gates. Phones will be confiscated and stored securely if they are seen, heard or used. The school does not accept any responsibility for lost, damaged or stolen items. Students are therefore advised not bring anything valuable to school.
- Students are expected to be respectful of the school environment and the people in it.
- Eating in lessons and on corridors is not allowed. Chewing gum is also banned.
- Parents/carers, students and staff are expected to adhere to the **Home School Partnership Agreement** - see page 10 for further details.
- Behaviour updates will be provided through the Class Charts app. This includes merits earned as well as any sanctions received. Notifications of the date, time and location of detentions, as well as your child's attendance at detentions, is also recorded on this app. Parents/carers and students will receive login details in September. Further information regarding Class Charts can be found at: https://pages.classcharts.com/wp-content/uploads/Class_Charts_for_parents_guide.pdf
- Behaviour at Liskeard is excellent. The vast majority of students work exceptionally hard and show respect to the staff and their peers. Occasionally some students forget the rules or choose not to follow them. When this happens, all teachers follow a series of behaviour steps to support a positive climate for learning in class and around the school. Further information on Behaviour & Rewards can be found on the school website (follow Teaching & Learning tab, then Behaviour & Rewards), including information on our Reflection space.

Rewards

Students receive merits in and out of class for a number of reasons including showing resilience, courage and kindness. Every week, each department awards a Student of the Week for each year group. Staff also nominate a Student of the Month for the whole school. Postcards and letters are sent home for students achieving high numbers of merits, excellent attitude scores and excellent attendance. We hold an annual Awards' Evening to recognise the wonderful effort and achievements of students across the school.



Child Protection and Safeguarding

We take our safeguarding responsibility very seriously in school. If a child protection or safeguarding concern is raised, the following will happen:

- A full investigation.
- Appropriate agencies informed and advice taken to support the child as soon as possible.
- Parents/carers informed, unless it would be detrimental to the child, or to the investigation itself.

If you have any queries, please ring and ask to speak to the Designated Safeguarding Lead (DSL). The DSL is assisted by other specially trained members of staff who have acquired the qualifications and experience as listed below.

Please see information on our Child Protection and Safeguarding on the [school website](#).

Clubs and Leadership Opportunities

There is something for everyone at Liskeard School. Your child will be encouraged to participate in life outside of the classroom to develop new skills and independence. On the following page is an example of the types of sports clubs offered to students in the Autumn Term.



We are also keen for your child to develop their leadership skills. There are several opportunities in terms of student leadership, including being part of the SMART Student Council.

Clubs

This is an example of the clubs we have on offer. We really encourage students to join clubs!



AFTER SCHOOL CLUBS

All clubs are open to all years, boys and girls.
Just come to the changing rooms after school with your PE Kit and join in!

Monday

Cricket



Crossfit



Tuesday

Ariel Ropes



Dance



Tennis



Wednesday

Athletics



Thursday

Rounders



Fixtures and Matches

#TeamLiskeard

Dates to be confirmed.

#TeamLiskeard

Creative Arts Clubs

Singing
Knit and Natter
Jazz Band
Orchestra
Brass Group
Caradon Strings
Drama

Science, Maths and Computing Clubs

Green Team
Maths Drop In
Astronomy
EPW Philosophy
Film Night
Chess
Computer Coding
Science Leaders

Technology and Business

Greenpower Car
Racing
F1 in Schools
Competition

Learning

Homework Club
Book Club
MKC Heroes Club
Debating

Communicating with School

We pride ourselves on excellent communication with parents/carers. Whilst secondary schools operate differently to primary schools, in the sense that it is less about catching a teacher to have a quick chat at the school gates, there are many ways we encourage communication between parents/carers and the school.

Class Charts

Class Charts is an app we use to inform parents/carers when their child receives a merit or if they have been issued a detention. Class Charts enables you to monitor and track your child's behaviour (positive and negative) over time.

Contact Home

We will send you information either via your child, e-mail, text or post. The easiest methods are email and text, so please check your email account regularly. All letters are also available for your convenience on the Liskeard School website.

Individual Appointments

If you would like an appointment with your child's tutor, Head of Year, Assistant Head of Year or subject teacher you are welcome to contact Reception by telephone, e-mail the member of staff directly or simply pop in to arrange this with our friendly Receptionists.

Satchel:One (previously Show My Homework)

The parent/carer part of this app is a brilliant way to inform you about the homework your child is being set so you can help at home and encourage good organisational skills.

Website & Social Media

Our website contains a wealth of information about the school, including resources to aid supporting your child's learning at home and a calendar of events. Regular updates and articles are posted on the front page of the website and via our social media pages (Facebook, Twitter and Instagram).

In addition to the above, you may need to contact us directly. Please follow this [link](#) to our website for contact details.



Curriculum

As parents/carers, you will know that the key to success for learners is aided through familiarising oneself with how to learn and to recap and recall information so that it starts to form part of the long-term memory.

In order to help this process, we have spent time creating excellent curriculum journeys and materials which are delivered by expert teachers. You can find these curriculum overviews here:

<https://www.liskeard.net/teaching-and-learning/curriculum>

In each subject area there is also a link to Knowledge Organisers that give a more detailed overview of what will be taught and learnt in each topic. The aim is that they will help parents/carers to understand what their child is learning in school and which topics you can help with at home.

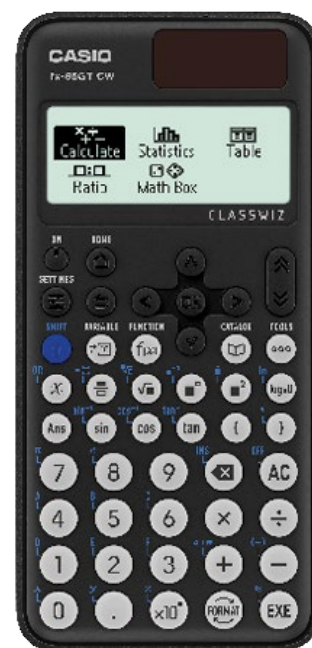
Staff will set homework related to information found within the Knowledge Organisers so these resources will be particularly useful when revision for assessments and end of year tests as the key information can be found in one place.

Equipment

Every Lesson	Maths and Science	IT and Languages	PE	Food Technology
Black pen* Calculator** Clear Pencil Case* Eraser* Exercise book Glue stick* Highlighter Green* Highlighter Yellow* Pencil* Purple pen for making corrections and improving work* Ruler* School bag/rucksack Sharpener	Compass Protractor*	Dictionary*** Headphones*	Games kit and suitable footwear for the activity; trainers or football boots	Your ingredients or money as required. Large container for the dish being made. <u>Practical Subjects</u> Students with long hair will also need a hair band when doing practicals in Science and Technology.
			Drama	
			Non-slip socks (optional)	

**Not all calculators work the same way. You will need to buy this one to use in your Maths and Science lessons:

**CASIO FX-83GT CW
Scientific Calculator**



*** Optional for languages - your child would benefit from a Collins dictionary (not the pocket version). If your child is in 7L, 7S, 7E or 7R they would need a French version. If they are in 7I, 7K or 7A they would need a Spanish version.

The calculator and dictionaries are available to purchase through ParentPay.

Expectations

Home School Agreement

The Home School Agreement is a contract between parents/carers, students and school. It clearly shows what we are all expected to do during your child's learning journey. This can be found within the Admission form completion process.

PARENTS/CARERS

We will:

- ✓ Encourage and support our child/children in their learning, both at school and at home.
- ✓ Praise them for showing positive behaviours including courage, resilience and kindness.
- ✓ Praise them for achieving positive attitude scores on their Progress Checks.
- ✓ Provide the necessary equipment and uniform.
- ✓ Inform the School directly if we have any concerns or queries (rather than share them publicly on social media) so that they can be dealt with immediately.
- ✓ Ensure regular, punctual attendance.
- ✓ Support the policies of the school in maintaining high standards of behaviour and uniform.
- ✓ Attend parents' evenings.
- ✓ Sign up for and regularly check the Class Charts and Satchel:One apps to monitor behaviours and homework for my child.

Parent/Carer signature _____

STUDENTS

We will:

- ✓ Be punctual and attend school regularly (including bringing notes to explain any absences).
- ✓ Bring the correct equipment to all lessons.
- ✓ Wear the correct uniform and be smart in appearance.
- ✓ Have a positive attitude to learning, show courage, resilience and kindness wherever possible.
- ✓ Try our best in all lessons, work sensibly with classmates and co-operate with adults.
- ✓ Take responsibility for communication between home and school. Show any messages from school to home immediately.
- ✓ Respect and take responsibility for the environment.
- ✓ Comply with the ICT Acceptable Use Policy.
- ✓ Co-operate with adults in school without argument.
- ✓ Follow the school rules and be respectful, polite and courteous.
- ✓ Regularly check my Class Charts and Satchel:One apps.
- ✓ Report any concerns to a member of staff or to your parents/carers

Student signature _____

STAFF

We will:

- ✓ Care for and support students.
- ✓ Build constructive working relationships with students and parents/carers.
- ✓ Promote and recognise positive behaviours such as courage, resilience and kindness.
- ✓ Provide high standards of teaching.
- ✓ Use rewards and sanctions consistently and clearly. These will be recorded on Class Charts.
- ✓ Provide a safe and attractive physical environment for learning.
- ✓ Communicate with parents/carers regularly.
- ✓ Listen to concerns and respond appropriately.

Tutor signature _____

First Aid

As well as our Student Health Centre at the centre of the school, we have First Aiders trained in departments across the school. If your child feels unwell or has an injury they will be referred to a trained member of staff in the first instance. If your child is too unwell to stay in school, then we will contact you and arrange for you to pick them up at Reception.

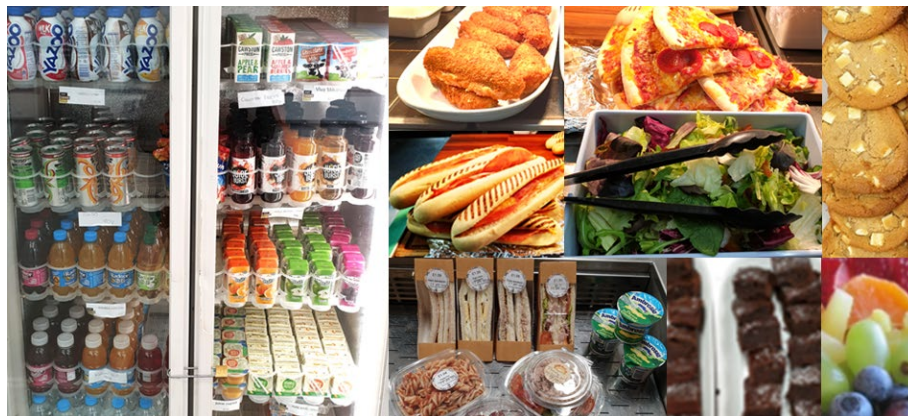
Your child should not keep any medication on their person unless they have a specific health care plan allowing them to do this. If they have to take medication it should be dropped into Reception and a form completed by parent/carer with details of how and when it should be taken.



Food and the Canteen

- ✓ School meals are cooked on site at Liskeard School. The most up-to-date menus and meal deals can be found on the school website (follow the Information tab then School Meals).
- ✓ We have a cashless catering system where each student has their own account. Money can be loaded on to the account via the ParentPay app on the internet.
- ✓ To pay for food, your child's thumb is scanned. The system uses reference points on their thumb and does not take a full finger print. Please complete the form giving permission for this in the book of forms enclosed. A four digit pin number is an alternative to the thumb scan.
- ✓ The canteen in the Old Hall and New Hall provide a variety of meals including a vegetarian option every day.
- ✓ Currently, the main school dinner will cost £2.35 or £2.75 for a "meal deal". The current meal deal is a main course with a dessert and a selected drink and is currently available on other selected hot/cold items, subject to availability. This is all subject to change in September in alignment with government allowances.
- ✓ A variety of hot and cold, sweet and savoury snacks are also available at break and lunch time including pizza, paninis, sandwiches, sausage rolls, baguettes, salad, bacon baps, assorted tray bakes, muffins, flapjacks, cookies, healthy snacks and more!
- ✓ A variety of drinks including fruit juice and milkshakes are available to purchase also. Bottled fruit flavour drinks contain "one of your 5 a day". Water is available to drink if you prefer, but students should bring a re-usable water bottle.
- ✓ Students' accounts can be topped up via ParentPay and daily spending limits can also be put on pupil accounts. Our caterers operate CASHLESS tills. There is a wall mounted machine for cash top ups for checking balances by the English classrooms.
- ✓ Students who are entitled to Free School Meals will have £2.75 loaded daily on their cashless account automatically. Any unused balance is NOT carried forward - it resets daily. Students will use their thumb scan to pay for food like all other students. An application form for FSM is available to download on the school website (follow Information tab, then Pupil Premium & Catch Up Funding.) Or you can apply online at: www.cornwall.gov.uk/schoolmeals
- ✓ Students bringing a packed lunch to school will be expected to eat in the Old Hall also. Please note that **energy drinks and fizzy drinks are NOT allowed in school.**

It is parents'/carers' responsibility to ensure the ParentPay account has adequate funds daily.



Homework

- ✎ Your child will be set regular weekly homework for most subjects. They may have some project homework to complete in some subjects too.
- ✎ Students need to: Login to Satchel:One (previously called Show My Homework), (an online website with app) in order to see the homework their teacher has set them. Often teachers will add helpful video clips, worksheets or links to websites to help your child with their homework. As a parent/carer you can also login to Satchel:One to view the same information and help your child organise their time.
- ✎ If your child does not have access to the internet at home, they are welcome to use the ICT facilities in school at lunchtime or after 3.15pm. There is also a Homework Club after school, open to all students. Please liaise with the pastoral team if your child requires this provision.
- ✎ Logins for Satchel:One will be issued in September. If your child has problems logging on to Satchel:One they need to ask for help from their teacher straight away (this also applies to other electronic platforms such as Sparx apps used for Maths homework.)
- ✎ We strongly advise new Year 7 students to get into good study habits by taking time to complete their homework thoroughly and not leaving it until the last minute.
- ✎ Your child must complete their homework on time – a deadline is a deadline.

An Example of a Y7 Homework as Viewed on Satchel:One

Checking Calculations 7x/Ma1

[Description](#) [Insights](#) [Assess](#) [Discussion](#)

■ Mrs C. Ollerenshaw set this assignment for group 7x/Ma1 - Mathematics

Set on Mon 07 Feb Due on Tue 15 Feb

Task description

The attached sheet (also given to you in class) has a series of questions that I would like you to complete WITHOUT a calculator! The most important aspect of this homework is your explanation as to **why** a question is right or wrong.

Other information

- This homework will take approximately 30 minutes
- Mrs C. Ollerenshaw would like you to hand in this homework in class

Resources to help you

DOC

Checking_Solutions_.doc
↓ Download

Languages

Most Year 7 students study either French or Spanish. Whether or not your child has French or Spanish lessons depends on which tutor group they are in. Students in:

7L learn French

7I learn Spanish

7S learn French

7K learn Spanish

7E learn French

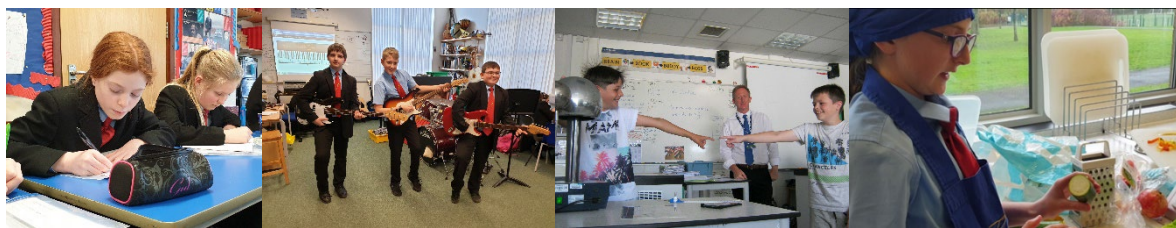
7A learn Spanish

7R learn French

Your child will continue to learn the language they started in Year 7 up to the end of Year 9. At this point, many students choose to take it as one of their GCSE subjects.



Lessons



- ✎ Lessons at Liskeard School are planned carefully so that students are engaged. There is a strong focus on ensuring high levels of learning and information retrieval.
- ✎ Your child will have a different teacher or teachers for each subject that they study.
- ✎ Your child's teacher will seat your child in a specific place in the classroom.
- ✎ Your child's teacher will encourage your child to progress in their learning by completing work to the best of their ability.
- ✎ In some lessons your child may need to work with other people in the class, either in pairs or small groups.
- ✎ Your child will be encouraged to gain more independence in their learning, building on the skills they have learnt at Primary School.
- ✎ Your child will be rewarded with merits for excellent work, effort, trying hard and not giving up easily or for outstanding contributions to learning.
- ✎ They can also receive merits for showing **kindness** towards others, having **courage** to try something new and being **resilient** when things get tough.
- ✎ Teachers will also sanction students who are not behaving appropriately or who are not working to the best of their ability using the [Relationships and Behaviour Policy](#).
- ✎ Your child will be assessed at regular intervals throughout their time at Liskeard School to ensure they are meeting their potential.

Literacy

Literacy is exceptionally important at Liskeard School. Our library is accessible at break and lunch times with a library pass acquired from the Assistant Head of Year. We have a great selection of books to suit students of a wide range of reading ages and interests.

We also have a Tutor Reading programme which gives our Year 7, 8 and 9 students the opportunity to be read aloud to regularly by their tutors. We have a wide range of exciting and challenging texts which allow students to experience a full range of world class fiction and non-fiction.

We recognise that, sometimes, some of us may need additional support with learning to read. As such, we have invested in a new, highly effective literacy programme. Thinking Reading offers three one-to-one reading lessons with a specially trained tutor every week to select students from Years 7-10. Each reading lesson involves 30 minutes of rigorous and personalised instruction on the decoding of words, vocabulary, and fluency. Students on the programme enjoy choosing their own texts and working with their tutor to move swiftly through the reading levels until they reach their chronological reading age.

Encouraging your child to read for pleasure is one of the biggest things you can do to help your child make progress at school. Reading for pleasure gives your child many things – an adventure into another world, an understanding of people and social relationships, excitement and wonder. Added to this, research shows that an 11-year old who reads for enjoyment for 30 minutes each day, boosts their school performance by up to a whole year!

Lockers

Lockers are available around the school site on a first come, first served basis. Students can choose and claim their own locker by bringing in their own padlock. This could be a padlock with a key, or combination, whatever works best for them. Please speak with the pastoral team for more information.



Lost Property

We recommend all students have **name labels** in their clothing and that items of significant personal or financial value are not brought into school. However, if your child does lose something then all lost property can be found in Reception. Students can go to Reception at break or lunchtime to look through the items found. Parents/carers are also welcome to access the lost property at any time during reception opening hours (8.00am-4.30pm, 4.00pm on Fridays). If, after six weeks, items have not been claimed, then the items will be donated to charity.



Mobile Phones

We are a mobile phone free school. Phones and devices can offer a huge range of opportunities; however, we recognise that students need careful support to avoid distraction and potential risk from inappropriate use. Mobile phones can be brought to school at the student's own risk; however, they **must be turned off and placed in their bag**. Phones must not be seen, used or heard on site **before school, in lessons, at social times or after school until outside of the school gates**. Phones will be confiscated if they are seen, heard or used. Confiscated phones are then stored securely and returned at the end of the day. If the same student is caught using their phone on a second occasion, then the phone will be confiscated until such time that parents/carers can come into school to collect it.

Payments

The easiest way to pay is through our online payment system – ParentPay. There is an activation code and explanatory letter included in this pack. You can then put money into your child's account to pay for school lunches and school trips or to buy equipment such as a calculator. If you have any questions relating to finance, the Finance Office number is 01579 342344 ext 112 or 146.



ParentPay®

**Pay online...
for peace of mind**

**Pay online for
- School Meals
- Trips**

How to pay online...
Step 1: Have your activation letter ready
Step 2: Login at www.parentpay.com
Step 3: Follow instructions to activate account
Step 4: Select 'Pay for items'

Porthpean

This year, the annual Year 7 residential camp at Porthpean Outdoor Education Centre takes place in the week beginning Monday, 21st October 2024. The year group are effectively split in half and so the X cohort (7L/7I/7S/7K) will attend between Monday, 21st October to Wednesday, 23rd October 2024 and the Y cohort (7E/7A/7R) will attend between Wednesday, 23rd October to Friday, 25th October 2024.

We have been attending Porthpean Outdoor Education Centre for over 25 years and believe it is a fantastic opportunity for pupils to get to know both other members of their tutor group and staff, experience new and different challenges and have lots of fun at the same time. The residential is a thoroughly worthwhile experience and we encourage all pupils to attend.

The cost of the residential will be £175 which covers all activities, food (other than a packed lunch on the first day), accommodation and transport. This can be paid in two instalments of a £90 deposit (non-refundable) and a follow-up payment of £85. Payments can be paid using ParentPay, the school on-line payment facility. If you have any problems using ParentPay please contact the Finance office on 01579 325712 or email Finance@liskeard.net. Please could you finalise the full payment by Monday 30th September 2024. For students entitled to free school meals or who are pupil premium, a subsidy may be available towards the cost of the trip. Please liaise with the finance office for further details.

Progress Checks

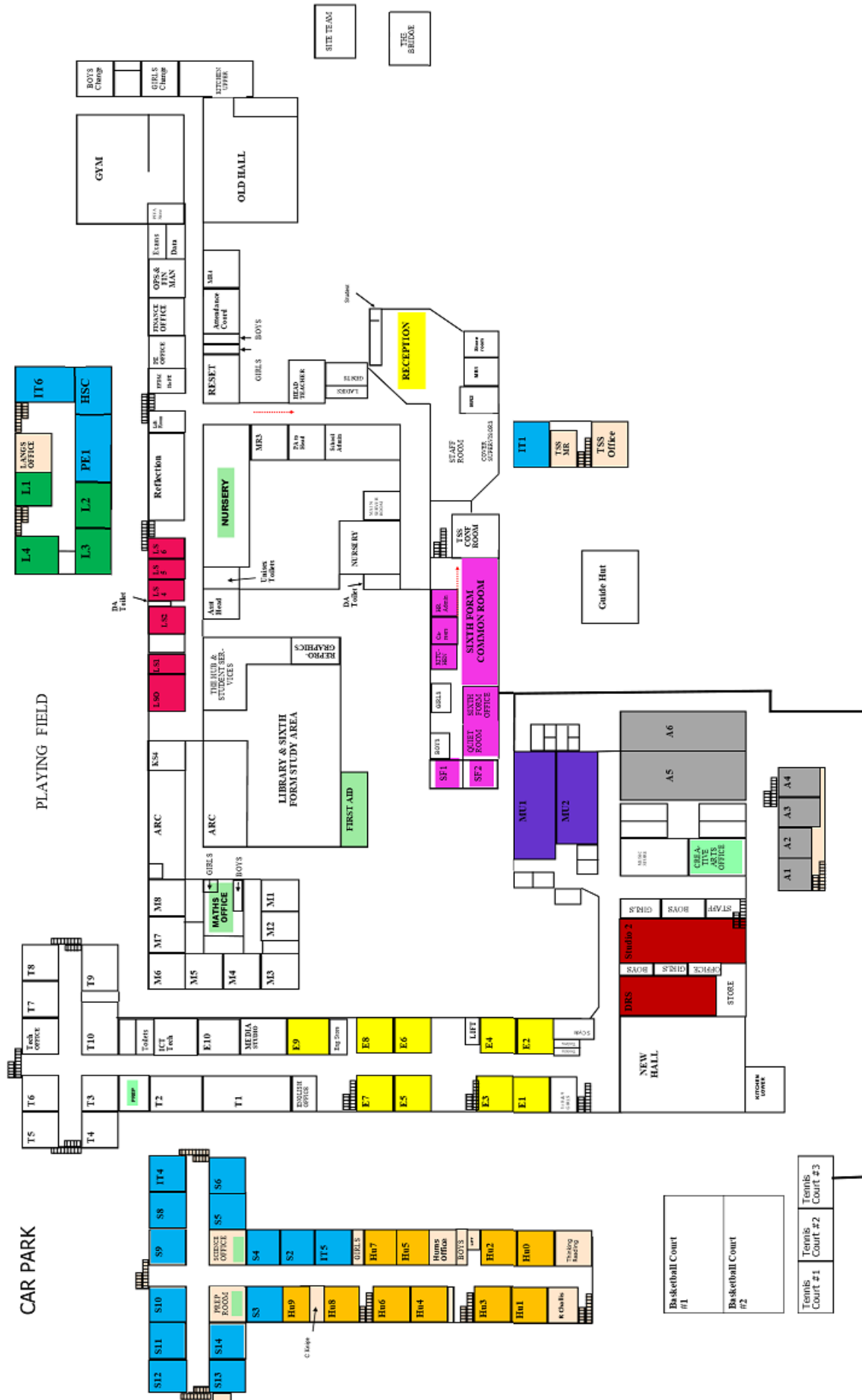
In the Autumn Term there is a Tutor Evening where you can find out from your child's tutor how well they have settled in. There is also a Progress Evening with your subject teachers later in the year and a Progress Check (similar to a report) which is sent to you.

The most important thing for your child to do is to try hard at school. On each of their Progress Checks there will be an Effort and Progress descriptor for each subject. The Progress descriptor helps you to understand how they're making progress in relation to other students in school with similar starting points.

Punctuality

We expect all students to arrive at school on time. We start the day with Morning Greeting which starts at 8.45am so your child should be in school and on their way to their Morning Greeting location by 8.42am at the latest. If your child is late, they must sign in at the Attendance Office. Lateness to school results in a 20-minute Head of Year lunchtime detention.

School Map



Term Dates 2024-25

	Start Date (inclusive)	End Date (inclusive)
Autumn Term	Tuesday, 3 rd September 2024 Wednesday, 4 th September 2024 is Y7 and 12 only	Friday, 20 th December 2024
	Half Term: Monday, 28 th October – Friday, 1 st November 2024	
	Non-Pupil Days: Tuesday, 3 rd September 2024, Friday, 22 nd November 2024	
Spring Term	Monday, 6 th January 2025	Friday, 4 th April 2025
	Half Term: Monday, 17 th February – Friday, 21 st February 2025	
	Non-Pupil Days: Monday, 24 th February 2025	
Summer Term	Tuesday, 22 nd April 2025	Friday, 18 th July 2025
	Half Term: Monday, 25 th May – Friday, 30 th May 2025	
	May Day Bank Holiday: Monday, 5 th 2025	

Times of the School Day

Students should be in school by 8.40am, at the latest, in preparation for the first warning bell to signal the start of the school day.

Time	Activity
8.45am - 8.50am	Morning Greeting
8.50am – 9.15am	Tutor Time/Assembly
9.15am – 10.30am	Period 1
10.30am – 10.50am	Break
10.50am – 12.05pm	Period 2
12.05pm – 1.20pm	Period 3
1.20pm – 2.00pm	Break
2.00pm - 3.15pm	Period 4

Timetable

- ✎ Timetables work on a **two-week rota**. So, for example, your child won't have the same lessons at the same time every Monday, but every *other* Monday.
- ✎ They will have four 75-minute lessons per day, plus Morning Greeting (5 minutes) and Tutor Time (2 minutes)
- ✎ A sample of a timetable is shown below. This is NOT your child's actual timetable for September.

Week 1

	Period 1	Period 2	Period 3	Period 4
Monday	Geography	ICT	Music	Languages
Tuesday	Drama	EPW	English	Science
Wednesday	English	History	Science	Maths
Thursday	Art	Technology	Maths	English
Friday	Science	Maths	English	PE

Week 2

	Period 1	Period 2	Period 3	Period 4
Monday	Music	Languages	Maths	English
Tuesday	PE	Geography	EPW	Technology
Wednesday	Science	Maths	Art	English
Thursday	Drama	English	Science	History
Friday	Languages	ICT	PE	Maths

For students in Year 7,8, 9 and 10, the school day is from 8.45 - 15.15, however students in Year 11 and 6th Form have additional teaching on some days which means they finish at 16.15. This allows them to get the maximum opportunity to succeed in their exam courses.

Transport

Where transport to school is required, please go to this website for further information and guidance from Cornwall Council.

<https://www.cornwall.gov.uk/schools-and-education/schools-and-colleges/school-and-post-16-travel/home-to-school-travel-assistance/>

Please see the example below of this current academic year's school bus timetable – the details are subject to change for the new academic year 2024-2025, so it is advisable to check with the bus company directly.

Liskeard School and Community College starts at 08:45 and finishes at 15:15.

Route No	From/To	Times am/pm	Bus Stops
LIS101 Smiths Coaches 01579 321607	Doublebois	08:05/15:50	Doublebois
	East Taphouse	08:10/15:45	East Taphouse
	Treburgie Water	08:14/15:42	Treburgie Water (pick up LIS112 am)
	Dobwalls	08:20/15:36	Dobwalls (Memorial Hall)
	Liskeard School	08:25/15:34	Dobwalls (Methodist Church)
		08:35/15:25	Liskeard School & Community College

Route No	From/To	Times am/pm	Bus Stops
LIS102 Smiths Coaches 01579 321607	Treverbyn Mill	07:57/16:03	Wenmouth Cross
	St Neot	08:02/15:58	St Neot (Institute)
	Dobwalls	08:04/15:56	Trip Hill Goonzion Corner
	Liskeard School	08:07/15:53	Goonzion Downs
		08:16/15:44	Halfway House (A38)
		08:18/15:37	Dobwalls (Rowes Garage)
		08:35/15:25	Liskeard School & Community College

Route No	From/To	Times am/pm	Bus Stops
LIS104 Smiths Coaches 01579 321607	Doublebois	08:02/16:03	Doublebois (Golf Course Turn)
	Redgate	08:05/16:00	Brenivor House
	St Cleer	08:11/15:53	Great Fursewith Turn
	Tremar	08:15/15:48	Redgate
	Venland Cross Liskeard School	08:18/15:43	St Cleer (Caradon View Junction)
		08:20/15:40	St Cleer (School)
		08:22/15:38	Phillips Corner - Tremar Coombe
		08:23/15:36	Tremar (Phone Box)
		08:24/15:35	Venland Cross
		08:35/15:25	Liskeard School & Community College

Route No	From/To	Times am/pm	Bus Stops
LIS105 Smiths Coaches 01579 321607	Commonmoor	07:48/15:37	Commonmoor Turn
	Minions	07:52/15:57	Minions
	Upton Cross	07:57/15:52	Upton Cross
	Crows Nest	08:07/15:45	Crows Nest
	Darite	08:10/15:43	Darite (Bus Shelter)
	Higher Tremar	08:15/15:40	Higher Tremar
	St Cleer (Post Box)	08:20/15:35	St Cleer (Post Box)
	Liskeard School	08:30/15:25	Liskeard School & Community College

Route No	From/To	Times am/pm	Bus Stops
LIS108 Smiths Coaches 01579 321607	Menheniot Merrymeet Liskeard School	07:55/15:35	Hayloft Restaurant Bus Stop A38
		08:03/15:43	Budges Shop
		08:05/15:45	Bethany (Church)
		08:06/15:46	Padderbury
		08:07/15:47	Doddycross
		08:10/15:50	Menheniot Square
		08:12/15:52	Trehane
		08:13/15:53	Wheal Honey
		08:15/15:55	Pengover Green
		08:16/15:56	Merrymeet
		08:35/15:25	Liskeard School & Community College

Route No	From/To	Times am/pm	Bus Stops
LIS110 Torpoint Minibuses (07706 940346)	Widegates Wringworthy Horningtops Trewidland Liskeard School	07:50/16:05	Widegates, Harding Meadow
		07:53/16:03	Wringworthy Cottagegs
		07:55/16:00	Lower Trenode Farm Turn
		07:56/15:40	Westwell, Horningtops
		07:58/15:42	Little Trethew Cottages Turn
		08:00/15:44	Great Trethew Farm Turn
		08:02/15:56	Blackadon Farm Turn
		08:04/15:58	A38/Horningtops Turn
		08:07/15:37	Horningtops
		08:10/15:32	Trewidland (Post Office)
		08:17/15:23	Brimboye Farm Turn
		08:18/15:22	Housey Farm Junction
		08:35/15:08	Liskeard School & Community College

Route No	From/To	Times am/pm	Bus Stops
LIS112 Smiths Coaches 01579 321607	Lanreath St Pinnock Trevelmond Liskeard School	07:45/16:10	Lanreath (Opp Church Layby)
		07:55/16:00	Trecan Farm Turn
		08:04/15:50	Polpiece Farm
		08:12/15:41	St Pinnock
		08:15/15:38	Trevelmond (Phone Box)
		08:28/15:25	Liskeard School & Community College

Route No	From/To	Times am/pm	Bus Stops
LISG73 Go Cornwall Bus 0808 196 2632 PUBLIC SERVICE BUS*	Polperro Pelynt Looe Duloe St Keyne Trevillis Park Railway Station Liskeard School	07:25	Polperro Crumplehorn
		07:38/16:31	Pelynt (Church)
		07:38/16:23	Tencreek
		07:48/16:18	West Looe (Fire Station)
		07:53/16:15	East Looe (Bridge)
		07:57/15:53	Sandplace Station
		08:01/15:49	Great Windsor Farm Turn
		08:03/15:50	Duloe (Post Office)
		08:08/15:45	St Keyne (Village Hall)
		08:11/15:40	Lodge Cottage Turn
		08:13	Lodge Hill
		08:14/15:39	Trevillis Park
		08:15/15:38	Liskeard Railway Station
		08:21/15:20	Liskeard School & Community College

Route No	From/To	Times am/pm	Bus Stops
LISG74 Go Cornwall Bus 0808 196 2632 PUBLIC SERVICE BUS*	Callington St Ive Pensilva Darite St Cleer Liskeard School	07:35/16:03	Callington (New Road)
		07:47/15:50	St Ive (Church End)
		07:57/15:41	Pensilva (Belmont Park)
		07:57/15:45	Pensilva (Victoria Inn)
		07:58/15:40	Pensilva (Glen Park)
		07:58/15:46	Pensilva (Millennium House)
		08:06/15:35	Darite (Bus Shelter)
		08:12/15:29	St Cleer (Church)
		08:23/15:20	Liskeard School & Community College

Uniform

All students in Years 7 to 11 are required to wear correct, neat and tidy uniform in school and on the journey to and from school. All items should be clearly named.



Black Blazer

Black Jumper - optional. A plain, black, V-neck jumper can be worn underneath a blazer.

Pale Blue Shirt - short or long sleeved with a top button.

Red Tie - for Years 7 – 10. (Blue tie for Year 11)

Black Liskeard logo Skirt – pleated and with school logo.

Black Trousers – smart, black trousers only; not jeans or leggings.

Black Shoes – flat, black, leather-type shoes. Not trainers, canvas shoes or boots.

Black Socks

UNIFORM RULES

Uniform should be worn correctly in school and on the way to and from school.

Shirts should always be tucked in.

Nail varnish should not be worn in school.

Make up should be natural in appearance.

Mobile phones must be off and in your school bag during the school day. They must not be seen or heard and will be confiscated if used during the school day.

Jewellery is not to be worn in school, apart from one pair of plain gold or silver studs worn one in each ear-lobe. **Please do not leave the piercing of ears late in the Summer holidays.**

There is an expectation that earrings **MUST** be removed for PE lessons from the start of term in September. Hair should be a natural colour and not an extreme cut.

Expensive items should not be bought into school; if your child does it is at their own risk.

***School ties, school skirts, other uniform items and specialist items of PE kit are available from our two local suppliers: Glynn Valley and Gilberts Outfitters.**



PE KIT

COMPULSORY

School PE top*

School PE shorts*

School sports socks*

Trainers

Shin pads

OPTIONAL

School long sleeve top*

Plain black tracksuit bottoms

School jacket*

Plain black base layer

Plain black sports leggings (to be worn under shorts at KS3 if required)

Football boots (these can be borrowed or swapped for a bigger size at school)



Liskeard School & Community College

Luxstowe, Liskeard, Cornwall. PL14 3EA

Phone: **01579 342344**

Email: enquiries@liskeard.net



*achieving **more** together*



Liskeard School & Community College is a member of SMART (South East Cornwall Multi Academy Regional Trust) Schools Trust, an exempt charity and a company limited by guarantee, registered in England and Wales, No: 7542166.
Registered Office: Liskeard School & Community College, Luxstowe, Liskeard, Cornwall, PL14 3EA.