

Safeguarding - Keeping Children & Staff Safe

IF YOU HAVE ANY CONCERNS ABOUT A CHILD'S WELFARE
OR A CHILD MAKES A DISCLOSURE TO YOU,
PLEASE LOG IN TO **MY CONCERN** AND REPORT IT.

DON'T KEEP IT TO YOURSELF!



Wendy Birkbeck

Designated Safeguarding Lead
can be found in Learning Support
Office along the Learning Support
corridor.

Ext: 187

wbirkbeck@liskeard.net



Rosie Soady

Deputy Safeguarding Lead
can be found in the Safeguarding
office in the corridor between
Humanities & Science

Ext: 127

rsoady@liskeard.net



**Roger
Quaintance**

can be found in
the Safeguarding
office in the
corridor between
Humanities &
Science

Ext: 101

rquaintance@liskeard.net



**Carole
Chapple**

can be found in
the Safeguarding
office in the
corridor between
Humanities &
Science

Ext: 101

cchapple@liskeard.net



**Corinne
Holroyd**

can be found in
the Learning
Support Corridor.

Ext: 131

cholroyd@liskeard.net

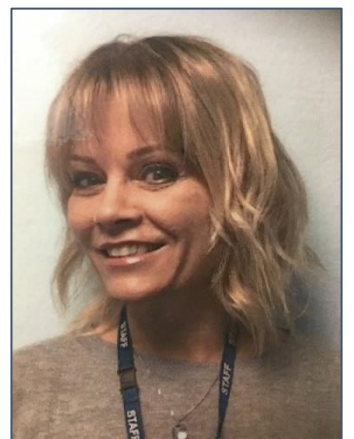


**Katy
Lewis-Tuxford**

can be found in
"The Bridge"
wellbeing Support
Centre

Ext: 106

klewistuxford@liskeard.net



**Dionne
Rodber**

can be found in
the ARC at the
end of the
Learning Support
Corridor.

Ext: 165

drodber@liskeard.net

IF STAFF HAVE CONCERNS ABOUT A COLLEAGUE AND WISH TO REPORT IT CONFIDENTIALLY,
PLEASE CONTACT THE WHISTLEBLOWING GOVERNOR:

CARL ROOBOTTOM
croobottom@liskeard.net

SALLY BERNE
sberne@liskeard.net