



read

# Natural Hazards

## Plate Tectonics



quiz

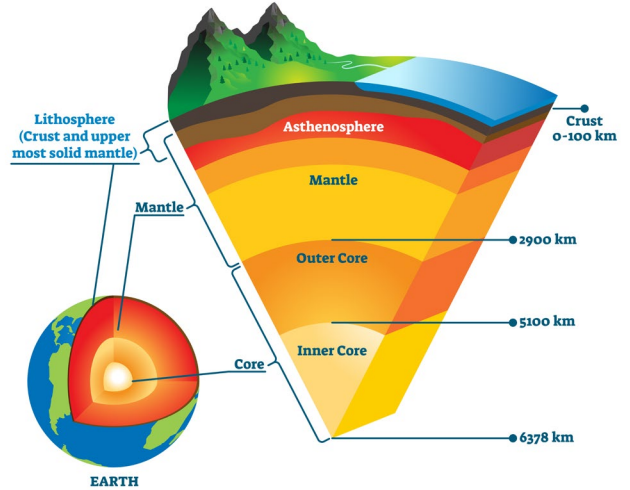
### The Big Picture



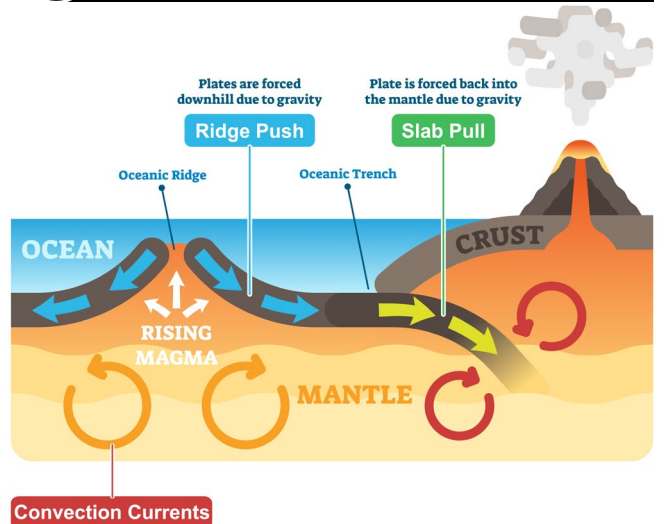
### Key Terms

- Asthenosphere** – The upper layer of the Earth’s mantle.
- Crust** – The rigid shell that surrounds the mantle. Oceanic crust is thinner but more denser than continental crust.
- Distribution** – The way something is spread out or arranged over a geographic area.
- Inner core** – The solid centre of the Earth made up of iron and nickel.
- Lithosphere** – The more rigid outer part of the Earth.
- Mantle** - Solid material surrounding the core that can flow very slowly.
- Outer core** – The liquid layer of iron and nickel surrounding the inner core.
- Tectonic plate** – A section of the Earth’s crust.
- Plate margin** – The margin or boundary between two tectonic plates.

### The Structure of the Earth



### How do Plates Move?



### The Distribution of Earthquakes and Volcanoes



- The distribution is not random.
- Narrow bands along plate margins.
- Occur on both land and sea.
- Volcanoes are found at constructive and destructive plate margins.
- Earthquakes occur at all three boundaries.