



# Urban Issues and Challenges

## The Growth of Lagos

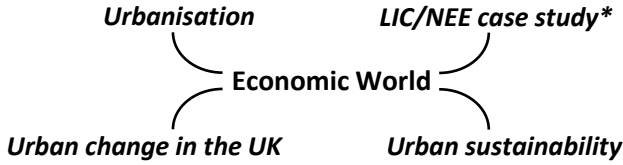


read

quiz



### The Big Picture



### Key Terms



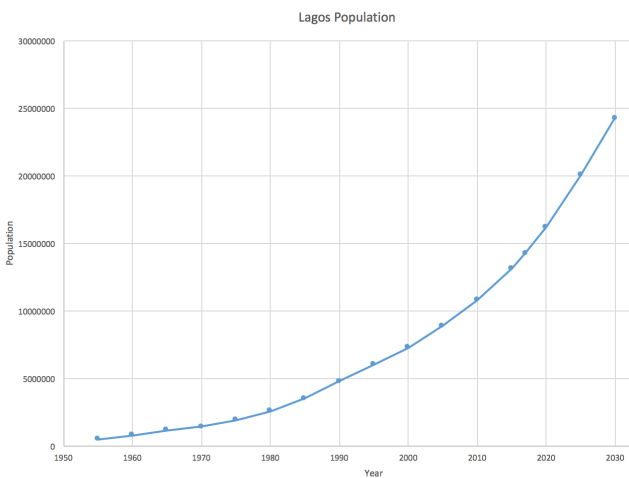
**Rural to urban migration** – The movement of people from the countryside to the city.



**Natural Increase** – The difference between live births and deaths in an area.



### Population Growth



Less than a million people lived in Lagos in 1960. By 1990 it reached four million, and around fifteen million by 2015. Estimates are higher at twenty million if the population of the surrounding area is included.



### Reasons for Growth



#### Rural to Urban Migration

The main driver of growth in Lagos over the past 50 years has been rural-urban migration. People are encouraged to leave the countryside by push factors such as the lack of job opportunities and low wages. They are brought to the city by pull factors such as the prospect of well-paid work and the attraction of an urban lifestyle.

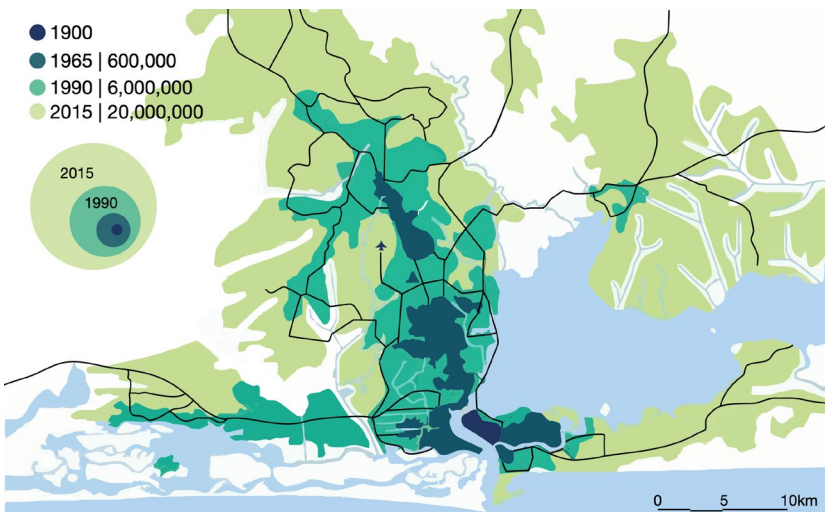


#### Natural Increase

Lagos has a high rate of natural increase. This is due to the city's youthful population since most migrants to the city are young. Nigeria is becoming an increasingly urbanised country. By 2015, just over half the population was still living in rural areas, but as rural-urban migration continues, the majority will be urban within the next few years.



### The Physical Growth of Lagos



The physical area of Lagos has also grown as its population has. Lagos Island was the original site of the settlement. Since then the city has grown onto the mainland. Rapid urbanisation occurred during the 1970s during the oil boom. Many thousands of people migrated to the area seeking employment opportunities. The growth of Lagos continued into the 1980s and 1990s.